



# 2024 SOMERVILLE SUMMER GUIDE

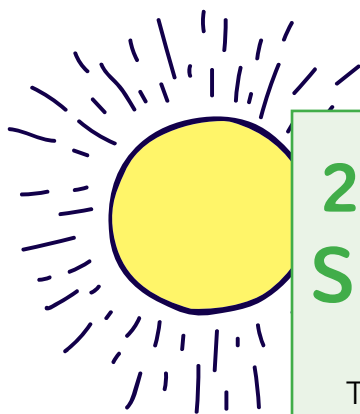
Summer Programs  
Overnight Camps  
Local College-Run Programs  
Teen Jobs  
Activities  
Afterschool School-Year  
Programs



ONE  
**Somerville**  
EVERY **child**

[somervillehub.org](https://somervillehub.org)

# Table of CONTENTS



## 2024 Somerville SUMMER GUIDE

This is the 2024 Somerville Summer Guide. It is a list of affordable and accessible local programs for all Somerville families.

Are you an organization that offers specialized instruction in sports, visual/performing arts, STEM (science, technology, engineering and mathematics). Do you offer financial aid/sliding scale payment options?

Please contact Madeleine Werner at [mwerner@somervillema.gov](mailto:mwerner@somervillema.gov) if you would like to be included in next year's directory, and/or be listed on the Somerville Hub.

Thank you to all of our collaborators!



SomerPromise



- 3 Full Day All Summer Programs
- 6 Full Day Part Summer Programs
- 9 Half Day Summer Programs
- 12 Overnight Sleep-Away Camps
- 13 Local College-Run Programs
- 14 Teen Jobs
- 16 Activities
- 20 Afterschool School-Year Programs
- 25 Summer Resources & Activities





# Full Day

## ALL SUMMER PROGRAMS

### ACERA SCHOOL STEAM CAMP



[aceraschool.org/summer-camps/](http://aceraschool.org/summer-camps/)  
[facebook.com/AceraSchoolMA](https://facebook.com/AceraSchoolMA)

**Ages:** 4–14 years

**Location:** 5 Lowell Ave, Winchester

**Contact:** Ryan Cutter, (781) 729-3428  
summercamp@aceraschool.org

Challenging, fun STEAM learning, from coding and lab science to woodworking and art. Half-day and full-day programs available. We are looking forward to a great summer full of fun for the children of Somerville!

### ARLINGTON BOYS AND GIRLS CLUB SUMMER CAMP



[abgclub.org](http://abgclub.org)

**Ages:** 2–17 years

**Location:** Spy Pond, 60 Pond Lane, Arlington

**Contact:** Lauren Topham,  
lduddy@abgclub.org

Wide variety of full day and half day options. Camps run in weekly sessions. Crafts, games, STEM, swimming, boating, outdoor adventures, field trips and more! A safe environment where kids can have fun and be themselves. Interesting, constructive activities that channel youthful energy into challenging pursuits. Structured camp, clinics and classes for 2–17 years; Club Kids drop-in for 8–17 years

### CAMBRIDGE MONTESSORI SCHOOL PASSPORT SUMMER CAMP

[cambridgemonteressori.org](http://cambridgemonteressori.org)

**Ages:** 18 months–11 years

**Location:** Cambridge Montessori School,  
161 Garden St, Cambridge

**Contact:** passport@cambridgemonteressori.org  
(617) 308-9458

Monday to Friday from 9am to 4pm. Join us for a summer full of fun and games, nature adventures, swimming, specialized programs and more!

### ELIZABETH PEABODY HOUSE CITY EXPLORERS



[teph.org/summer-enrichment](http://teph.org/summer-enrichment)

**Ages:** 5–12 years

**Location:** 277 Broadway, Somerville

**Contact:** Nita Doss, jdoss@teph.org  
(617) 623-5510 x105

Monday to Friday from 8:30am to 4:30pm. Somerville is our playground, awaiting new explorers. City Explorers allows youth to explore all things Somerville and beyond. From discovering hidden gems to touring as many parks in Somerville as possible, with trips to the pool at Foss Park to cool down. And, of course, field trips every Friday. There will be a new theme every week, which includes social and emotional learning with educational yet fun activities. We provide transportation services for summer school students from Somerville Public Schools, Prospect Hill Academy, and St. Theresa of the Child Jesus School.

### ELIZABETH PEABODY HOUSE EVERWOOD DAY CAMP



[teph.org](http://teph.org)

**Ages:** 4–13 years

**Location:** Everwood Day Camp, Sharon, MA

**Contact:** Nita Doss, jdoss@teph.org  
(617) 623-5510 x105

Monday to Friday from 7:30am to 5:30pm. Transportation is provided from Elizabeth Peabody House to and from the camp located in Sharon, MA daily. With over 60 different activities in categories such as adventure, nature, and science, creative and performing arts, sports, and aquatics, every day at Everwood Day Camp is different and sure to keep your child engaged and growing. Spaces are limited and are assigned based on availability for specific age and grade of students. Please contact Elizabeth Peabody House in the first instance for more information on spaces and enrollment process.

### FRIENDS OF MIDDLESEX FELS FOREST CAMP



[friendsofthefells.org](http://friendsofthefells.org)

**Ages:** 6–12 years

**Location:** 489 Winthrop Street, Medford

**Contact:** forestcamp@fells.org

Monday to Friday from 9am to 4pm. Camper drop off and pick up is located at Medford High School and all of our camp programming takes place in the Lawrence Woods section of the Middlesex Fells Reservation. Our



Low cost/  
Financial aid available



Transportation  
available

counselors provide nature-based learning opportunities for children to engage in a self-guided exploration of the forest, helping develop their curiosity, critical thinking, and sense of connection with nature.

### GIRL SCOUTS OF EASTERN MA CAMP CEDAR HILL



[gsema.org/en/activities-and-camp/summer-camp/day/cedar-hill.html](https://gsema.org/en/activities-and-camp/summer-camp/day/cedar-hill.html)

**Ages:** 5–17 years

**Location:** Camp Cedar Hill Waltham, MA  
Bus Stops available at Winter Hill Community School

**Contact:** Cheryl Oliveira,  
[customercare@gsema.org](mailto:customercare@gsema.org)

A hop, skip, and a jump from Boston, on 75 acres of natural beauty. Make memories and friends to last a lifetime. Try archery, swimming in our two pools, boating in the pond, high and low ropes challenge courses, and the alpine climbing tower. Financial Aid is available.

### MYSTIC LEARNING CENTER SUMMER PROGRAM



[mysticlearningcenter.org](https://mysticlearningcenter.org)

**Ages:** 5–13 years

**Location:** 530 Mystic Ave, Somerville

**Contact:** Tracey Stearns,  
[info@mysticlearningcenter.org](mailto:info@mysticlearningcenter.org)

A full day program including day trips to parks, beaches and local attractions, picnics, literacy, talent shows, club activities and much more. Includes breakfast, lunch and snacks.

### PARKOUR GENERATIONS PARKOUR AND CLIMBING ADVENTURE DAY



[bostonboulderingproject.com/youth](https://bostonboulderingproject.com/youth)

**Ages:** 5–12 years

**Location:** 12A Tyler St, Somerville

**Contact:** Laura MacDonald,  
[laura.macdonald@boulderingproject.com](mailto:laura.macdonald@boulderingproject.com)

The summer adventure program runs every day 9am to 3:30pm with extended day available. Rock-climbing, bouldering, team building, arts and crafts, and partnerships with local organizations such as Parkour Generations Boston.

### PARKS AND RECREATION SOMERTIME DAY PROGRAM



[tinyurl.com/register-for-rec](https://tinyurl.com/register-for-rec)

**Ages:** 5–13 years

**Location:** West Somerville Neighborhood School  
177 Powder House Boulevard

**Contact:** Ryan Chambers,  
[rchambers@somervillema.gov](mailto:rchambers@somervillema.gov)  
(617) 626-6600 x 2993

Somertime is our full day summer program. During the day participants will participate in a variety of activities such as swimming, sports, arts and crafts, music, special events, and field trips every Friday! Running Monday to Friday, 8:30am to 4:30pm from June 24th to August 9th.

### PARTS AND CRAFTS SUMMER PROGRAMS



[partsandcrafts.info/general-6-2](https://partsandcrafts.info/general-6-2)

**Ages:** 7–13 years

**Location:** 561 Windsor St. Suite B402, Somerville

**Contact:** [contact@partsandcrafts.org](mailto:contact@partsandcrafts.org)  
(617) 207-8016

Themed weeks of invention and creation. Running Monday to Friday from 9am to 3pm, extended day options are available. Sliding scale and scholarships available.

### SOMERVILLE MEDIA CENTER CREATOR CAMP



[somervillemedia.org/learning/youth-programs/](https://somervillemedia.org/learning/youth-programs/)

**Ages:** Rising 3rd–8th Graders

**Location:** 90 Union Square, Somerville

**Contact:** Evan Tingle, [etingle@scatvsomerville.org](mailto:etingle@scatvsomerville.org)

Creator Camp is a summertime workshop studio that focuses on giving young creators the communication skills to collaboratively create Stop-motion Animation, Short films, Podcasts, Comedy Skits, Songs, Live Shows, YouTube Channels and more! Every week will be full of surprises with unique themes and challenges each team will need to overcome together. Attendees work with creative team leaders to learn tricks of many trades, while building lasting relationships with other creators in their community! Full and partial scholarships available upon request.



**SOMERVILLE PUBLIC SCHOOLS**  
**ADVENTURE SUMMER PROGRAM**  
**LEADERS-IN-TRAINING**



**Ages:** Rising 7th–9th graders  
**Location:** East Somerville Community School  
50 Cross St, Somerville  
Arthur D. Healey School  
5 Meacham St, Somerville  
**Contact:** Hailie Andrade,  
(617) 625-6600 x6970

July 6th - August 11th. Monday to Friday from 8am to 4pm. Leaders-In-Training will engage in team building and group work. Structured activities include outdoor play, visual and performing arts, wellness and cooking, world cultures, STEAM, technology, and physical education based on weekly themes. Local and out-of-town field trips are scheduled two days per week. Rising 7th, 8th and 9th graders cost \$80.00 per week (reduced rate of \$35 for week of July 4th). Hot Breakfast, lunch, and snacks provided. Registration opens March 28th.

**SOMERVILLE PUBLIC SCHOOLS**  
**ADVENTURE SUMMER PROGRAM**



[tinyurl.com/sps-summer-adventure-program](http://tinyurl.com/sps-summer-adventure-program)

**Ages:** Rising Kindergarten–6th graders  
**Location:** East Somerville Community School  
50 Cross St, Somerville

Arthur D. Healey School  
5 Meacham St, Somerville

**Contact:** Hailie Andrade,  
(617) 625-6600 x6970

July 6th - August 11th. Monday to Friday from 8am to 4pm. There will be groups in Kindergarten-2nd grade and 3rd-6th grade. Structured activities include outdoor play, visual and performing arts, wellness and cooking, world cultures, STEAM, technology, and physical education based on weekly themes. Local and out-of-town field trips are scheduled for two days per week. \$267 per week (\$115 the week of July 4, a 2-day week). Hot Breakfast, lunch, and snacks provided. Registration opens March 28th.

**SOMERVILLE YMCA**  
**PRE-KINDERGARTEN/KINDERGARTEN**  
**SUMMER PROGRAM**



[somervilleymca.org](http://somervilleymca.org)  
**Ages:** 4–6 years  
**Location:** 97 Highland Avenue, Somerville  
**Contact:** Francesca Ciccone,  
fciccone@somervilleymca.org

June 24th - August 23rd, Monday to Friday from 7:45am to 5:45pm. Join us this summer for an adventure into the world of STEAM Programming. Field trips are scheduled for 1-2 days per week. Breakfast and hot lunch provided. Cost: \$350 per weekly session. Department of Early Education and Care (EEC) Vouchers are accepted. Income eligible financial assistance is available on a first come first served basis.

**SOMERVILLE YMCA**  
**STEAMING AHEAD @ THE Y!**  
**SUMMER PROGRAM**



[somervilleymca.org](http://somervilleymca.org)  
**Ages:** Rising 1st – 8th graders  
**Location:** 101 Highland Avenue, Somerville  
**Contact:** Francesca Ciccone,  
fciccone@somervilleymca.org

June 24th-August 23rd, Monday to Friday from 7:45am to 5:45pm. Join us this summer for an adventure into the world of STEAM Programming. Field trips are scheduled for 2-3 days per week depending on the age of the child. Breakfast and hot lunch provided. COST: \$300.00 per weekly session. Department of Early Education and Care (EEC) Vouchers are accepted, limited financial assistance is available on a first come first serve. Transportation provided from Mystic Housing, Clarendon Hill Towers and North Street locations for families living in a Somerville Housing Authority (SHA) Complex only.



Low cost/  
Financial aid available



Transportation  
available

## STEVE AND KATE'S CAMP



[steveandkatescamp.com](http://steveandkatescamp.com)

**Ages:** 4–12 years

**Location:** Cambridge Friends School  
5 Cadbury Rd, Cambridge

**Contact:** Tyler Rosati, [somerville@steveandkate.com](mailto:somerville@steveandkate.com)  
(617) 245-0410

Lunch and snacks are included running from 8am to 6pm. Steve and Kate's has put kids in charge of their own learning experience. Kids choose from a variety of activities in real-time, including sewing, coding, maker crafts, baking, sports, and more! Families can buy any number of days, to use at any time – no weekly reservations required. Or, buy a Summer Pass, which covers the whole season. Either way, any unused Passes are automatically refunded at summer's end!

# Full Day

## PART SUMMER PROGRAMS

### DEILAB



### RC RACING ACADEMY

[deilab.com/racing-academy](http://deilab.com/racing-academy)

**Ages:** Rising 4th–12th graders

**Contact:** [info@deilab.com](mailto:info@deilab.com)  
(301) 440-8445

Half day and full day weekly camps. DEILAB Radio Controlled Racing Academy is a hands-on program that provides in-depth exposure to the science and excitement of racing to inspire and educate students about STEAM. They will learn about the engineering and science of race cars from how they are designed, built and driven on indoor and outdoor tracks. Each student will get a full range of opportunities to drive, build, repair and race the cars. The program will culminate in a championship race day open to friends and family.

### EAST END HOUSE



### MIDDLE SCHOOL SUMMER PROGRAM

[eastendhouse.org](http://eastendhouse.org)

**Ages:** Rising 6th–8th graders

**Location:** PAUS, 100 Putnam Avenue,  
Cambridge

**Contact:** Marsé Romero, [marse@eastendhouse.org](mailto:marse@eastendhouse.org)

Monday to Friday from 8am–5:30pm. This program runs for about 5-6 weeks. Campers will get to build community, gain new experiences, eat 3 meals a day along with snacks, participate in daily activities and clubs, weekly swimming, weekly field trips, and more. One-time \$50 enrollment fee.



## CAMBRIDGE ELLIS SCHOOL (CES) SUMMER PROGRAMS

[cambridge-ellis.org/programs/summer-programs](http://cambridge-ellis.org/programs/summer-programs)

**Ages:** 1.9–5 years

**Location:** 80 Trowbridge St, Cambridge

**Contact:** [Katie@Cambridge-Ellis.org](mailto:Katie@Cambridge-Ellis.org)

June and July are full of fun, exploration, and water play at the CES summer program! We offer full day and half day options: 8:30am to 12:00pm, 8:30am to 3:00pm, or 8:30am to 6pm programming for Toddlers and Preschoolers alike. Toddler-age classrooms are available for children 1.9 years and older. Language Immersion classrooms in French, Mandarin, and Spanish are available for children over the age of 3 years. Running from June 17th - July 26th. Extended hours available.

## EAST END HOUSE SUMMER FUN PROGRAM

[eastendhouse.org](http://eastendhouse.org)

**Ages:** 5–11 years

**Location:** East Cambridge

**Contact:** Jessica Camenzuli, (617) 876-4444  
[jessica@eastendhouse.org](mailto:jessica@eastendhouse.org)

Monday to Friday from 7:30am to 5:30pm. Campers participate in daily activities such as art, music, science, and sports; academic enrichment, weekly field trips, swimming, and 3 healthy meals daily. COST: \$50 a day, \$250 a week.

## FRIENDS OF MIDDLESEX FELLS SCIENCE AND DISCOVERY PROGRAM

[friendsofthefells.org](http://friendsofthefells.org)

**Ages:** 7–9 years

**Location:** 489 Winthrop Street, Medford

**Contact:** [forestcamp@fells.org](mailto:forestcamp@fells.org)

Camper drop off and pick up is located at Medford High School and all of our camp programming takes place in the Lawrence Woods section of the Middlesex Fells Reservation. Our Science and Discovery Program focuses on ecosystems, habitats, forest layers and pollinators. Full day programming is from 9am to 4pm.

## FRIENDS OF MIDDLESEX FELLS FOREST UP CLOSE PROGRAM

[friendsofthefells.org](http://friendsofthefells.org)

**Ages:** 8–10 years

**Location:** 489 Winthrop Street, Medford

**Contact:** [forestcamp@fells.org](mailto:forestcamp@fells.org)

Camper drop off and pick up is located at Medford High School and all of our camp programming takes place in the Lawrence Woods section of the Middlesex Fells Reservation. This program engages children in how to think and talk like scientists and to explore details of the forest with a discerning eye. Kids learn about decomposing logs, water systems, and lichen, and have opportunities to practice nature journaling. This is a one week, full day program (9am to 4pm).

## SOMERVILLE ARTS COUNCIL MUSICAL THEATER PROGRAM

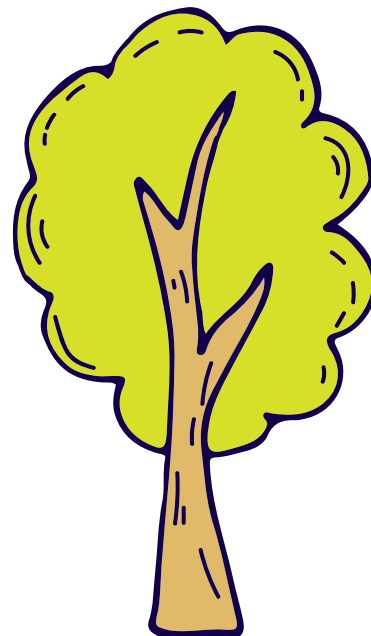
[somervilleartscouncil.org/musical](http://somervilleartscouncil.org/musical)

**Ages:** 8–13 years

**Location:** To be determined (in Somerville)

**Contact:** Greg Jenkins, [gjenkins@somervillema.gov](mailto:gjenkins@somervillema.gov)  
(617) 625-6600 ext 2985

This full day summer program is focused on musical theater. Held at the Armory at 9am to 4:30 pm from July 1st to 3rd and July 8th to 26th, with shows on July 26th and 27th. Drop off begins at 8:30; pick up no later than 5:00p.m. This program will have four staff and a maximum of 40 youth.



Low cost/  
Financial aid available



Transportation  
available

## SOMERVILLE PUBLIC SCHOOLS SUMMER EXPLORE KINDERGARTEN TRANSITION PROGRAM



<https://somerville.k12.ma.us/blog/preparing-kindergarten>

**Ages:** Rising Kindergarten students

**Location:** Capuano Early Childhood Center,  
150 Glen St., Somerville

**Contact:** Kathleen Bailer,  
kbailer@k12.somerville.ma.us

Discover the exciting FREE Summer Explore Kindergarten Transition Program to support academic readiness for kindergarten. Summer Explore offers experiences for children with little to no preschool experience or who would benefit from summer programming as they transition to kindergarten. Students learn readiness skills and make friends to support a smooth entry into kindergarten. They will have a daily routine that includes free breakfast and lunch, learning in literacy and math, time to play, and extra fun activities. Attendance is required from Monday to Friday over the four-week duration of the program, with drop-off at 8am and flexible pick up between 2-4pm.

## THE WELCOME PROJECT EXPLORING CULTURE AND IDENTITY SUMMER PROGRAM



[welcomeproject.org/summer.html](http://welcomeproject.org/summer.html)

**Ages:** Rising 4th–8th graders

**Location:** 530 Mystic Ave, Somerville

**Contact:** Sara Lodgen,  
sara@welcomeproject.org

FREE. Exploring Culture and Identity Summer Program. Running July 15th to 26th, Monday to Friday from 10am to 3pm. Our summer program brings together youth from immigrant families to explore their cultural backgrounds through art projects, field trips, storytelling, photography, and more.



## BREAKTHROUGH GREATER BOSTON HIGH SCHOOL SUMMER PROGRAM



[breakthroughgreaterboston.org/high-school-program/](http://breakthroughgreaterboston.org/high-school-program/)

**Ages:** Rising 9th–12th graders

**Location:** Somerville High School,  
81 Highland Ave, Somerville

**Contact:** info@btgbmail.org, (617) 349-6647

The Leadership Academy is a unique summer program that allows rising 9th grade Breakthrough students to return for the summer to strengthen the academic and leadership skills they will need to make a smooth transition to high school in the fall. Breakthrough's College Prep Institute provides intensive support with the college application process for rising 12th grade students as well as financial aid and scholarship applications. Through Breakthrough's Summer Exploration and Opportunities Program (SEOP), staff work with each current student to identify and apply for enrichment and internship opportunities for the summer.





# Half Day

## SUMMER PROGRAMS

### ALL COURT ENRICHMENT TENNIS AND WRITING CAMP

[tinyurl.com/coach-drew-tennis](https://tinyurl.com/coach-drew-tennis)

**Ages:** 7–14 years

**Location:** Foss Park in Somerville and  
Dugger Park in Medford

**Contact:** Drew Hendrickson, [drewhendrickson@allcourtenrichment.org](mailto:drewhendrickson@allcourtenrichment.org)

Monday to Friday from 9am to 12pm weekly sessions. Students receive 2 hours of tennis and fitness programming, and 30-45 minutes of writing activities each day. The tennis and fitness aspect of the program is fun, fast paced, and engaging with a wide range of games and challenges as they work on their tennis skills. The writing side of the program is creative and fun as well including journaling and interesting writing prompts each day. Over the course of each week, a strong sense of community and friendship builds among the students and staff as we work together to achieve goals, complete challenges, and have fun together. Running June 24 - August 23, 2024 at Foss Park and July 8-August 16 at Dugger Park.

### DAVIS SQUARE MARTIAL ARTS SUMMER PROGRAMS

[davissquaremartialarts.com](https://davissquaremartialarts.com)

**Ages:** 7–16 years

**Location:** 408 Highland Ave, Somerville

**Contact:** [dsma.office408@gmail.com](mailto:dsma.office408@gmail.com)  
(617) 591-9656

June 17th to August 22nd. Our summer programs are designed for students who range in experience from beginner to black belt. Each one-week session will include 15 hours of kung fu training. By training with us, your child can develop better focus, concentration, physical coordination, flexibility, confidence, patience, and discipline. With hard work and dedication, a student can accomplish in one week what would normally take two to three months in regular, school-year classes. Register by April 15th and save \$25/week!

### FRIENDS OF MIDDLESEX FELLS ART IN NATURE PROGRAM

[friendsofthefells.org](https://friendsofthefells.org)

**Ages:** 6–8 years

**Location:** 489 Winthrop Street, Medford

**Contact:** [forestcamp@fells.org](mailto:forestcamp@fells.org)

Monday to Friday from 9am to 12pm. Camper drop off and pick up is located at Medford High School and all of our camp programming takes place in the Lawrence Woods section of the Middlesex Fells Reservation. This program focuses on connecting children to nature through hands-on art projects. Kids learn to experience the forest thoughtfully through their observations and work on projects that encourage them to think about the natural world more deeply and from multiple perspectives.

### FRIENDS OF MIDDLESEX FELLS FOREST CAMP

[friendsofthefells.org](https://friendsofthefells.org)

**Ages:** 4–8 years

**Location:** 489 Winthrop Street, Medford

**Contact:** [forestcamp@fells.org](mailto:forestcamp@fells.org)

Camper drop off and pick up is located at Medford High School and all of our camp programming takes place in the Lawrence Woods section of the Middlesex Fells Reservation. Our counselors provide nature-based learning opportunities for children to engage in a self-guided exploration of the forest, helping develop their curiosity, critical thinking, and sense of connection with nature. Half day programs (3 hrs) are offered in the morning and afternoon for our youngest and middle aged groups (Forest Kindergarten, ages 4-5, and Forest Explorers ages 6 - 8). Morning sessions: 9am to 12pm, Afternoon Sessions: 1pm to 4pm.

### MYSTIC LEARNING CENTER BASKETBALL LEAGUE

[mysticlearningcenter.org](https://mysticlearningcenter.org)

**Ages:** 8–18 years

**Location:** 530 Mystic Ave, Somerville

**Contact:** Tracey Stearns,  
[info@mysticlearningcenter.org](mailto:info@mysticlearningcenter.org)

FREE. A six-week summer program from mid-June through early August on Tuesday and Thursday evenings from 6pm–8pm.

## PARKOUR GENERATIONS SUMMER SKILLS CLINICS



[pkgenboston.com/clinics-camps](http://pkgenboston.com/clinics-camps)

**Ages:** 6–13 years

**Location:** Lincoln Park, Somerville High School,  
other outdoor parks

**Contact:** [boston.info@parkourgenerations.com](mailto:boston.info@parkourgenerations.com)  
(617) 302-7542

Half-day Parkour programming to build skills and explore our city. The perfect physical outlet for your child to learn to safely explore their environment while they build strength, improve coordination, and increase confidence!

## PARKS AND RECREATION CANOE ON THE MYSTIC



[tinyurl.com/register-for-rec](http://tinyurl.com/register-for-rec)

**Ages:** 5–14 years

**Location:** Blessing of the Bay Boathouse,  
32 Shore Drive, Somerville

**Contact:** Yianny Tsirigotis, 617-625-6600 ext. 2994  
[jtsirigotis@somervillema.gov](mailto:jtsirigotis@somervillema.gov)

Monday to Friday from July 1st to August 9th. Morning (9–12pm) OR afternoon (1–4pm) sessions available. In this program children will be learning the basic techniques of rowing and water safety. During the program participants will row from the boat house to the Mystic Lakes and to the start of the Malden River. Following some fun on the water participants will enjoy fun recreational activities such as scavenger hunts, water balloon games, sports, board games and more! Registration fee of \$50 for residents.

## PARKS AND RECREATION GOALIE CLINIC



[tinyurl.com/register-for-rec](http://tinyurl.com/register-for-rec)

**Ages:** 8–18 years

**Location:** Various Somerville parks

**Contact:** Marco Osoy, [mosoy@somervillema.gov](mailto:mosoy@somervillema.gov)  
(617) 625-6600 ext. 2990

This program will focus on fundamentals of goalkeeping such as positioning, agility, and reaction time. Free registration required.

## PARKS AND RECREATION KIDSTOP



[tinyurl.com/register-for-rec](http://tinyurl.com/register-for-rec)

**Ages:** 3–5 years

**Location:** Nathan Tufts Park, 850 Broadway, Somerville

**Contact:** Ryan Chambers, (617) 626-6600 x2993,  
[rchambers@somervillema.gov](mailto:rchambers@somervillema.gov)

This half-day program offers children activities such as active games, arts and crafts, and weekly themes. This is a drop off program. Children must be independently toilet trained. The six-week program costs \$150 for the whole session, with options to drop off Mondays/Wednesdays OR Tuesdays/Thursdays. Running from July 1st to August 8th.

## PARKS AND RECREATION LAWN GAMES PROGRAM



[tinyurl.com/register-for-rec](http://tinyurl.com/register-for-rec)

**Ages:** 8–17 years

**Location:** To be determined (in Somerville)

**Contact:** Jeremy Vallesio, [jvallesio@somervillema.gov](mailto:jvallesio@somervillema.gov)

FREE. Lawn games is an exciting program that will allow participants to play in an array of lawn games including bocce ball, cornhole, ladder toss, ball slam, and saucer slam. A different game will be played each week with a focus on learning the rules and enjoying the games in a fun and non-competitive format. This program provides a great opportunity for participants to get out and socialize with your peers while enjoying lawn games! Registration is required.

## PARKS AND RECREATION PARKS PROGRAM



[tinyurl.com/register-for-rec](http://tinyurl.com/register-for-rec)

**Ages:** 5–16 years

**Location:** Various parks in Somerville

**Contact:** Jeremy Vallesio, [jvallesio@somervillema.gov](mailto:jvallesio@somervillema.gov)

Monday to Friday from 9am to 12pm. The Parks Program is a half day, outdoor program that will include a variety of recreational games, arts and crafts projects and board games.

## PARKS AND RECREATION SPEED AND CONDITIONING CLINIC



[tinyurl.com/register-for-rec](http://tinyurl.com/register-for-rec)

**Ages:** 12–18 years

**Location:** To be determined (in Somerville)

**Contact:** Marco Osoy, [mosoy@somervillema.gov](mailto:mosoy@somervillema.gov)  
(617) 625-6600 ext. 2990

FREE. Speed and conditioning involves a wide range of exercises developed to build a variety of skills with a focus on mind, mobility, stability, strength, endurance, power, speed, agility and performance. This program aims to improve strength and endurance, reduce the incidence and severity of sports injuries, and to improve technique and overall performance. Registration required.



## PARKS AND RECREATION SPORTS CLINICS



[sommerville.com](http://sommerville.com)

**Ages:** 5–16 years

**Location:** To be determined (in Somerville)

**Contact:** Marco Osoy, [mosoy@sommervillema.gov](mailto:mosoy@sommervillema.gov)  
(617) 625-6600 ext. 2990

FREE. Each clinic is one week long that runs from 9am to 12pm. Participants will learn various aspects of their chosen sport. Participants will play games, participate in activities, and learn more about the fundamentals of the chosen sport. Location, age, and cost vary based on sport. See the website for upcoming information on the following clinics: Baseball/Softball, Ultimate Frisbee, Tennis, Golf, Track and Field, Soccer, Basketball, Lacrosse, and Volleyball. Registration is required.

## SCHOOL OF HONK



[schoolofhonk.org/summerhonk/](http://schoolofhonk.org/summerhonk/)

**Ages:** 12+ years

**Location:** Somerville High School,  
81 Highland Ave, Somerville

**Contact:** Rosalie Norris, [schoolofhonk@gmail.com](mailto:schoolofhonk@gmail.com)

Running from July 15th to 26th from 9am to 12pm. This program is for band instruments and percussion: trumpet, clarinet, flute, saxophone, trombone, and drums. \$125/wk, with some scholarships available.

## SCHOOL OF ROCK WATERTOWN MUSIC CAMPS

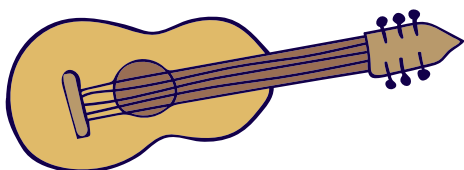
[schoolofrock.com/locations/watertown/music-camps](http://schoolofrock.com/locations/watertown/music-camps)

**Ages:** 4–18+ years

**Location:** 120 Elm Street, Watertown

**Contact:** [watertown@schoolofrock.com](mailto:watertown@schoolofrock.com)  
(617) 923-3434

School of Rock's music camps offer a wide selection of various music experiences. From beginner music camps to intermediate and advanced sessions, our music camps and workshops near you will further a student's musical foundation. Most of our camps end with a live show performed by the campers. Check School of Rock Watertown's upcoming music camps and workshops to sign-up today. New location opening in Medford in Fall 2024!



Low cost/  
Financial aid available



Transportation  
available

## SOCCER WITHOUT BORDERS LEAGUE FOR NEWCOMER YOUTH IN SOMERVILLE



[soccerwithoutborders.org](http://soccerwithoutborders.org)

**Ages:** 11–14 years

**Location:** The Field at Winter Hill Community School

**Contact:** Bruno Contreras,  
[bruno@soccerwithoutborders.org](mailto:bruno@soccerwithoutborders.org)

This free program will reach 50 students in the summer with soccer play and instruction, team building and cultural exchange, with a priority on elevating opportunities for youth to connect socially with their peers, providing a safe space to play supporting physical and mental health, and opportunities for youth to practice English in a lower stakes' environment than the classroom.

## SOMERVILLE PUBLIC SCHOOLS MIDDLE GRADES ROBOTICS SUMMER PROGRAM



[tinyurl.com/SPS-summer-programming](http://tinyurl.com/SPS-summer-programming)

**Ages:** 10–14 years

**Location:** Somerville High School  
81 Highland Ave, Somerville

**Contact:** Laura Peters, [lpeters@k12.somerville.ma.us](mailto:lpeters@k12.somerville.ma.us)

Explore creative computing and robotics with high school students from the Somerville High School (SHS) Robotics Team. Design music-making and artistic LEGO or Arduino robots, compete in fun team challenges, learn how to use 3D printers and laser cutters to personalize your bots! No experience required; there are beginner and advanced programs available.

## SOMERVILLE PUBLIC SCHOOLS SUMMER MUSIC CAMP



[tinyurl.com/SPS-summer-programming](http://tinyurl.com/SPS-summer-programming)

**Ages:** Rising 3rd–8th graders

**Location:** East Somerville Community School  
50 Cross Street, Somerville

**Contact:** Joanne Sadler,  
[jsadler@k12.somerville.ma.us](mailto:jsadler@k12.somerville.ma.us)

Two-week orchestra summer program. Classes include chamber music, improv, chorus, fiddle, technique, music theory, and orchestra rehearsals for woodwinds, brass, and string instruments. Beginners welcome. Taking place from July 22nd to Aug 2nd from 8:30am to 12:30pm Concert: Friday August 2nd at 10am. Breakfast and Lunch provided.

# Overnight

## SLEEP-AWAY CAMPS

### CAMP HAWKEYE

[camphawkeye.com](http://camphawkeye.com)

**Ages:** 7–17 years

**Location:** New Hampshire (transportation available from Logan Airport)

**Contact:** Jessica, [jess@camphawkeye.com](mailto:jess@camphawkeye.com)  
(781) 315-1297

Camp Hawkeye is the un-traditional sleepaway camp with a commitment to creating a diverse community. 70 campers and 35 staff make it perfect for first time campers of any age. We include campers and staff from a variety of social, ethnic, economic, religious, and geographic backgrounds as well as across the gender spectrum. With the feel of family and the healthy experience of the outdoors, Camp Hawkeye uses the joy and fun of camp to break down social and cultural prejudices, misconceptions and barriers.



### CAMP KESEM

[kesem.org/programs-services/camp-kesem](http://kesem.org/programs-services/camp-kesem)

**Ages:** 6–18 years

**Location:** Massachusetts Institute of Technology (MIT) to Camp Watitoh

**Contact:** [mit.outreach@kesem.org](mailto:mit.outreach@kesem.org)

FREE. We serve children who have lost a parent to cancer, have a parent undergoing cancer treatment, or whose parent is a cancer survivor. We offer two separate weeks of fun, action-packed and 100% free of-charge programming every summer as well as year-round support. Pickup and drop-off is at MIT's campus; transportation is provided from MIT to Camp Watitoh. Our campers experience a warm and loving environment with other children who have similar life experiences and supportive counselors.



### GIRL SCOUTS OF EASTERN MA OVERNIGHT CAMP

[gsema.org/](http://gsema.org/)

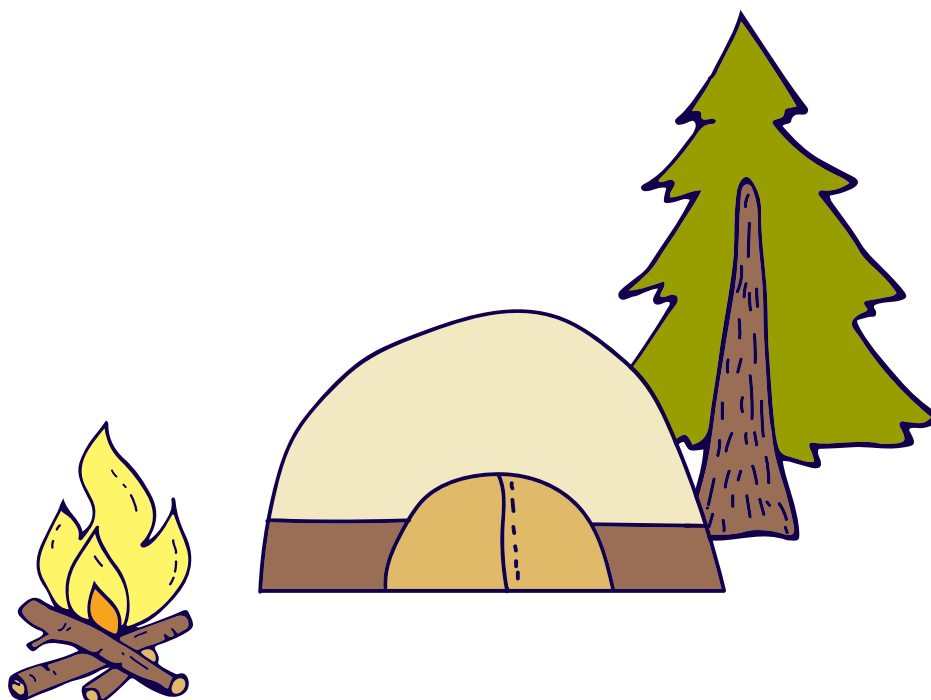
**Ages:** 5–17 years

**Location:** Various locations in MA and NH

**Contact:** Sarah Kelley,  
[customercare@gsema.org](mailto:customercare@gsema.org)



A wide variety of fun overnight and family camps offering indoor and outdoor activities.





# Local College

## PROGRAMS

### BERKLEE COLLEGE OF MUSIC PROGRAMS FOR HIGH SCHOOL STUDENTS

[summer.berklee.edu/](http://summer.berklee.edu/)

**Ages:** 15+ years

**Location:** 1140 Boylston St, Boston

**Contact:** [summer@berklee.edu](mailto:summer@berklee.edu)  
(617) 747-2245

Learn from Grammy-, Tony-, and Oscar-winning artists. Connect and collaborate with more than 3,000 like-minded musicians, actors, and dancers from over 70 countries. For most Summer Programs, students can enroll instantly—no audition required.

### BOSTON UNIVERSITY (BU) SUMMER HIGH SCHOOL PROGRAMS

[bu.edu/summer/high-school-programs/](http://bu.edu/summer/high-school-programs/)

**Ages:** Rising 9th–12th graders

**Location:** Boston University  
Charles River Campus

**Contact:** [summer@bu.edu](mailto:summer@bu.edu), (617) 353-5124

BU's long-running Summer Term offers a choice of one-, two-, three-, and six-week programs that prepare you for success in college. With five exciting and challenging pre-college summer programs to choose from, you can earn college credit, discover a new subject area, perform cutting-edge research in University labs, or immerse yourself in hands-on learning.

### EMERSON COLLEGE PRE-COLLEGE PROGRAMS

[emerson.edu/pre-college-programs](http://emerson.edu/pre-college-programs)

**Ages:** 14+ years

**Location:** 120 Boylston Street, Boston

**Contact:** (617) 824-8500

Emerson College's Arts and Communication Pre-College Programs offer intensive summer experiences for high school students. Pre-College at Emerson are designed to teach students competitive, practical skills

in communication and the arts. Most of our programs are in-person, which means you will live on our urban campus in downtown Boston and have access to the instructors, resources, and spaces (TV studios, camera kits, sound stages, etc.) that Emerson undergraduate students do.

### FRANKLIN CUMMINGS TECH SOMERVILLE RENEWABLE ENERGY COURSE

[franklincummings.edu/](http://franklincummings.edu/)

**Ages:** Rising 11th–12th graders

**Location:** The Dojo @ Somernova

**Contact:** Lara Tavares  
[ltavares@franklincummings.edu](mailto:ltavares@franklincummings.edu)

Franklin Cummings Tech, a nonprofit college in Boston focused on career success in clean energy, will be offering a free college course on renewable energy this spring in Somerville.

When: Seven Saturdays from 9am–4pm (with breaks and lunch) from April 27th to June 15th. Earn three free, transferable college credits (worth \$2100) and a \$250 stipend.

### HARVARD UNIVERSITY COLLEGE PROGRAMS FOR HIGH SCHOOL STUDENTS

[summer.harvard.edu/high-school-programs/](http://summer.harvard.edu/high-school-programs/)

**Ages:** Rising 10th–12th graders

**Location:** 51 Brattle St, Cambridge

**Contact:** [bhollinger@harvard.edu](mailto:bhollinger@harvard.edu)  
(617) 495-3192

Harvard's Summer College Programs are intensive and designed to give students a glimpse of college and the opportunity to challenge themselves in college-level academics. You'll meet new friends from around the world and build important life skills that can make your future college experience a success — all while strengthening your college application.



Low cost/  
Financial aid available



Transportation  
available



## LESLEY UNIVERSITY

### HIGH SCHOOL SUMMER PROGRAM AT THE COLLEGE OF ART AND DESIGN

[lesley.edu/lp/pre-college](https://lesley.edu/lp/pre-college)

**Ages:** Rising 10th–12th graders

**Location:** 29 Everett St, Cambridge

**Contact:** [precollege@lesley.edu](mailto:precollege@lesley.edu)

Running from July 15th to 26th. Are you a rising high school sophomore, junior, or senior, or a gap-year student, thinking ahead to college and your future career? Enroll in college-level studio classes taught by inspiring faculty at Lesley University's College of Art and Design and meet other young people who are as driven and creative as you are. Classes are offered in both the morning (9:30 am to 1pm) and afternoon (2pm - 5:30 pm). A special exhibition and reception will be held on the last day of the program.

## NORTHEASTERN UNIVERSITY

### SUMMER PROGRAMS

[stem.northeastern.edu/summer/](https://stem.northeastern.edu/summer/)

**Ages:** Rising 6th–12th graders

**Contact:** Claire Duggan,  
[c.duggan@northeastern.edu](mailto:c.duggan@northeastern.edu)

Various STEM programs for middle and high school students.

## TUFTS UNIVERSITY

### PRE-COLLEGE PROGRAMS

[universitycollege.tufts.edu/high-school](https://universitycollege.tufts.edu/high-school)

**Ages:** Rising 9th–12th graders

**Location:** Tufts University Medford Campus

**Contact:** [precollege@tufts.edu](mailto:precollege@tufts.edu)  
(617) 627-2926

At Tufts, our Pre-College Programs offer ambitious high school students the opportunity to learn from renowned faculty, scholars, and researchers and to experience a rigorous academic environment at a leading higher education institution. Summer 2024 Applications are now open!

# Teen Jobs

## CITY OF SOMERVILLE

### MAYOR'S SUMMER JOBS PROGRAM

[tinyurl.com/mayors-summer-jobs](https://tinyurl.com/mayors-summer-jobs)

**Ages:** 15 years – summer of high school graduation year

**Location:** Citywide – varies by placement

**Contact:** [summerjobs@somervillema.gov](mailto:summerjobs@somervillema.gov)

In this six-week program, participants will be matched with municipal and private sector positions and have opportunities for career exploration as well as employability skill development. Teens are employed up to 20 hours per week.

## GIRL SCOUTS OF EASTERN MA (GSEMA)

### DAY CAMP STAFF

[gsema.org/](https://gsema.org/)

**Ages:** 16+ years

**Location:** Camp Cedar Hill Waltham, MA  
Bus Stops available at Winter Hill  
Community School

**Contact:** Cheryl Oliveira, [customercare@gsema.org](mailto:customercare@gsema.org)

GSEMA camp jobs provide invaluable leadership experience. Free additional training available, such as lifeguarding, archery and first aid. Day Camp Salary starts at \$15.00, with additional money-earning opportunities available: Extended day, bus monitor, late night sessions etc.

## GROUNDWORK SOMERVILLE

### GREEN TEAM

[groundworksomerville.org/programs/green-team/](https://groundworksomerville.org/programs/green-team/)

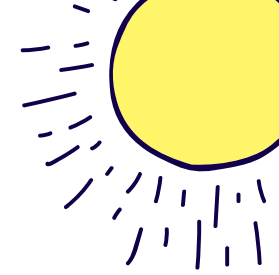
**Ages:** 14–18 years

**Location:** 138 South St., Somerville

**Contact:** Kenzie Ballard,  
[greenteam@groundworksomerville.org](mailto:greenteam@groundworksomerville.org)

The Green Team is a teen employment and leadership program that grows food for our community, works for environmental justice, and teaches how to be leaders in our community. The Green Team helps work towards Groundwork Somerville's mission of a cleaner, greener, healthier, and more equitable city. We hope to pro-





vide a bike to all Green Team members who need one during the summer. We are hiring 24 teenagers, as well as 6 Green Team Leaders (18+). During the school-year, 8 teens will be hired in the Fall and in the Spring.

### MYSTIC LEARNING CENTER THE MURAL PROJECT

[somervilleartscouncil.org/mysticmural](http://somervilleartscouncil.org/mysticmural)

**Ages:** Rising 9th–12th graders

**Location:** Mystic Activity Center  
530 Mystic Ave, Somerville

**Contact:** Greg Jenkins, [gjenkins@somervillema.gov](mailto:gjenkins@somervillema.gov)  
(617) 625-6600 ext 2985

Every year a diverse group of 10 Somerville Youth come together to design and paint panels to add to the famous Mystic Mural Project. Part time approx. 20 hours per week for 6 weeks, paid. Now a part of the City summer jobs program; please apply there, and specifically request “Mystic Mural program”

### PARKOUR GENERATIONS PARKOUR COACH-IN-TRAINING PROGRAM

[pkgenboston.com/cit](http://pkgenboston.com/cit)

**Ages:** 14–18 years

**Location:** The Dojo @ Somernova

**Contact:** [boston.info@parkourgenerations.com](mailto:boston.info@parkourgenerations.com)  
(617) 302-7542

Learn how to share parkour with younger generations, and pick up valuable professional skills in the process. An intensive week of on-site training and preparation followed by a flexible summer schedule assisting at our various programs in the area and participating in professional development activities with our team of experienced coaches and mentors.

### SOMERVILLE YMCA LEADERS IN TRAINING

[somervilleymca.org/programs/leaders-in-training-program/about/](http://somervilleymca.org/programs/leaders-in-training-program/about/)

**Ages:** 13–16 years

**Contact:** Matt O'Donnell,  
[modonnell@somervilleymca.org](mailto:modonnell@somervilleymca.org)

Are you looking to get job training, develop leadership skills and do really fun team activities? The Somerville YMCA Leader-In-Training Job Readiness Program is designed for you! Youth can gain valuable job training during one of two sessions this Winter and Spring to prepare you for future employment in a career area that interests you!

### TEEN EMPOWERMENT TEEN EMPOWERMENT YOUTH ORGANIZERS

[teenempowerment.org](http://teenempowerment.org)

**Ages:** Rising 10th–12th graders

**Location:** 165 Broadway, Somerville

**Contact:** Danny McLaughlin,  
[danny@teenempowerment.org](mailto:danny@teenempowerment.org)

Various programs hiring youth throughout the year that Prioritize issues in the community and work to plan and implement initiatives. Year round, Meet 4-5 times a week, \$17.09/hr.

### THE SOMERVILLE FOUNDATION YOUTH INTERNSHIPS

[somervilleedfoundation.org](http://somervilleedfoundation.org)

**Ages:** Rising 9th–12th graders

**Contact:** Rafael Vieira, (603) 913-9610  
[rvieira@somervilleedfoundation.org](mailto:rvieira@somervilleedfoundation.org)

This program aims to provide a voice to the youth and young adult population of Somerville/adjacent communities while building their competencies surrounding community engagement and public policy.

### THE WELCOME PROJECT LIAISON INTERPRETERS PROGRAM OF SOMERVILLE (LIPS PROGRAM)

[welcomeproject.org/lips.html](http://welcomeproject.org/lips.html)

**Ages:** Rising 9th–12th graders

**Location:** 530 Mystic Ave, Somerville

**Contact:** [lipsprogram@welcomeproject.org](mailto:lipsprogram@welcomeproject.org)

LIPS trains bilingual teens to use their second language for translation and interpretation as both a career option and to serve their community through interpretation assignments and community organizing. We also help students from immigrant families navigate the college application process through workshops on various topics, one-to-one counseling meetings, and college tours.

# Activities

## AROUND HEAR



### ALL-AGES PIANO AND VIOLIN CLASSES

[aroundhear.org](http://aroundhear.org)

**Ages:** 10+ years

**Location:** 530 Mystic Ave, Somerville

**Contact:** [aroundhearsomerville@gmail.com](mailto:aroundhearsomerville@gmail.com)  
(857) 928-7134

Do you want to learn to play the piano or violin? Do you already play, but wish you had a fun group to play with every week? We have the class for you! Our goals are to develop our technical, expressive musical powers on our instruments, to make harmonious music together, and to support each other's musical goals and dreams.

## AROUND HEAR



### COMMUNITY WORKSHOPS

[aroundhear.org](http://aroundhear.org)

**Ages:** All ages!

**Location:** 530 Mystic Ave, Somerville

**Contact:** [aroundhearsomerville@gmail.com](mailto:aroundhearsomerville@gmail.com)  
(857) 928-7134

Somerville is home to many musicians, music groups, and organizations, and Somerville Housing Authority residents and affiliates deserve access to the wonderful work that they do. To that end, we are seeking connections between the Somerville music community and the Somerville Housing Authority through a new series of all-ages public workshops.

## BOOKS OF HOPE



### BEEN OUT HERE OPEN MIC

[bohmlc.com/BOHMic](http://bohmlc.com/BOHMic)

**Ages:** High School Students

**Location:** 29 Properzi Way, Somerville

**Contact:** [booksofhopenmlc@gmail.com](mailto:booksofhopenmlc@gmail.com)

Presented in collaboration with Teen Empowerment, Northeast Junior Youth Spiritual Empowerment Program (JYSEP) Somerville, and Arts at the Armory.

## COMMUNITY BOATING INC BOATING ON THE MYSTIC



[community-boating.org](http://community-boating.org)

**Ages:** 10–17 years

**Location:** Boston Esplanade near Massachusetts General Hospital (MGH) Footbridge

**Contact:** [frontoffice@community-boating.org](mailto:frontoffice@community-boating.org)

Sailing, paddling, and windsurf lessons, STEM programs, games, and other activities are offered to Greater Boston's youth. What better way to spend a summer than learning to sail and making new friends in the heart of the city? Need-based sliding fee as low as one dollar!

## GROUNDWORK SOMERVILLE



### SOUTH ST. FARM FIELD TRIPS

[groundworksomerville.org](http://groundworksomerville.org)

**Location:** 138 South St., Somerville

**Contact:** Leah McCarthy,  
[urbanag@groundworksomerville.org](mailto:urbanag@groundworksomerville.org)

We provide field trips throughout the growing season (March – November) at our urban demonstration garden. We welcome schools, after-school programs, and other educational-related organizations to join us for a 1-2-hour field trip at \$10-15 per student.

## GROUNDWORK SOMERVILLE



### DURING-SCHOOL GARDEN PROGRAMMING

[groundworksomerville.org](http://groundworksomerville.org)

**Ages:** Pre-Kindergarten–12th graders

**Contact:** Kenzie Ballard,  
[greenteam@groundworksomerville.org](mailto:greenteam@groundworksomerville.org)

Groundwork Somerville partners with the Somerville Public School District to provide garden and nature-based lessons in every school garden. Students learn to grow, harvest, and prepare farm-fresh produce in practical, hands-on lessons that connect academic subjects to fun, creative activities.





## MOE FENCING CLUB FOIL CLASSES

[moefencingclub.com](http://moefencingclub.com)

**Ages:** 7–12 years

**Location:** 290 Broadway, Somerville

**Contact:** [moefencinginfo@gmail.com](mailto:moefencinginfo@gmail.com)  
(617) 301-0699

This is a great experience for kids at the start of their competitive path or interested in exploring this dynamic and captivating Olympic sport! Drills, competitions and games designed to scaffold active learning, focus, teamwork and a healthy concept of competition. Equipment and uniform is available for participants at a reduced cost.

## MYSTIC LEARNING CENTER OPEN MIC NIGHT



[bohmlc.com/bohmic](http://bohmlc.com/bohmic)

**Ages:** 8th–12th graders

**Location:** 191 Highland Ave, Somerville

**Contact:** [booksofhopenmlc@gmail.com](mailto:booksofhopenmlc@gmail.com)

FREE. Youth writing workshop with guest artists and facilitators. Snacks provided. 6:00 – 8:00pm on the first Wednesday of every month from September to June. Registration required.

## OPENAIR CIRCUS CAMP



[openaircircus.org](http://openaircircus.org)

**Ages:** 5+ years

**Location:** Parks in Somerville

**Contact:** Peter Jehlen, (617) 947-1191  
[peter\\_jehlen@openaircircus.org](mailto:peter_jehlen@openaircircus.org)

FREE six week program from late June to early August. Learn a wide variety of circus-related and acrobatic skills for one hour in late afternoon/early evening classes. Students will participate in a class performance at the end of the course. Requested donation is \$30/child. The parks we teach/perform at are typically situated along public transit lines as well as being bicycle, walking, and car friendly.

## PARKS AND RECREATION ADAPTIVE SPORTS CLINICS



[somervillerec.com](http://somervillerec.com)

**Ages:** 5–17 years

**Location:** To be determined (in Somerville)

**Contact:** Jeremy Vallesio,  
[jvallesio@somervillema.gov](mailto:jvallesio@somervillema.gov)

The Adaptive Sports Clinic features Basketball, Soccer, Hockey, and Baseball/Softball. Clinics are specifically designed to ensure a safe and successful environment for students with disabilities to participate in team sports. \$100 for Somerville Residents; \$150 for Non-Somerville Residents.

## PARKOUR GENERATIONS TEEN AND ADULT CLASSES



[pkgenboston.com](http://pkgenboston.com)

**Ages:** 14+ years

**Location:** Outdoor parks, Boston Boulder Project, The Dojo @ Somernova, and the Somerville Armory

**Contact:** [boston.info@parkourgenerations.com](mailto:boston.info@parkourgenerations.com)  
(617) 302-7542

Join our weekly evening and weekend classes for teens and adults throughout Somerville to stay active all year round. For all abilities and fitness levels, drop-in, full-season, and monthly membership sign up options available!

## PARKS AND RECREATION BASKETBALL SKILLS AND DRILLS WITH TAK



[tinyurl.com/register-for-rec](http://tinyurl.com/register-for-rec)

**Ages:** 13–18 years

**Location:** To be determined (in Somerville)

**Contact:** Brooke Metivier, (857) 300-3272  
[bmetivier@somervillema.gov](mailto:bmetivier@somervillema.gov)

FREE. Every Tuesday from 3–5pm from July 1st to August 8th. This 6-week basketball clinic is for teens of any gender to help individual players learn skills, enhance their skills, and apply skills into game like drills and scrimmages! Registration is required.

## PARKS AND RECREATION BOATHOUSE TEENS



[tinyurl.com/register-for-rec](http://tinyurl.com/register-for-rec)

**Ages:** 14–18 years

**Location:** Blessing of the Bay Boathouse  
32 Shore Drive, Somerville

**Contact:** Brooke Metivier, (857) 300-3272  
[bmetivier@somervillema.gov](mailto:bmetivier@somervillema.gov)

Happening every Wednesday at 11:30am from July 3rd to August 7th.



Low cost/  
Financial aid available



Transportation  
available

## PARKS AND RECREATION FREE FIELD USE



[tinyurl.com/register-for-rec](https://tinyurl.com/register-for-rec)

**Location:** Capuano Field at Glen Park,  
Somerville

**Contact:** Brooke Metivier, (857) 300-3272  
bmetivier@somervillema.gov

FREE. Happening every Monday and Wednesday from 2-4pm from July 1st to August 7th! Somerville Parks and Recreation Teen Programming Staff will oversee teen free field use and provide equipment. Teens can use the Capuano Field to play various sports (football, soccer, etc.) or just come to hangout!

## PARKS AND RECREATION OPEN GYM



[tinyurl.com/register-for-rec](https://tinyurl.com/register-for-rec)

**Ages:** 13–18 years

**Location:** To be determined (in Somerville)

**Contact:** Brooke Metivier, (857) 300-3272  
bmetivier@somervillema.gov

FREE. Every Thursday from 2-4pm from July 1st to August 8th. Any teen can enjoy this Summer Open Gym opportunity! Somerville Parks and Rec staff will provide sporting equipment (volleyballs, basketballs, soccer balls, etc) and supervise teens. Get out of the hot sun and enjoy some physical activities indoors!

## PARKS AND RECREATION POWDERHOUSE TEEN CENTER



[tinyurl.com/powderhouse-teen-center](https://tinyurl.com/powderhouse-teen-center)

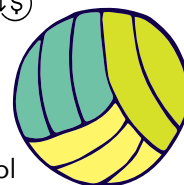
**Ages:** 12–18 years

**Location:** 838 Broadway, Somerville

**Contact:** Brooke Metivier, (857) 300-3272  
bmetivier@somervillema.gov

FREE. Fridays at 1-3pm from July 5th to August 9th. This is an opportunity for our Powderhouse Teens to enjoy their space throughout the summer, and for any other teens looking for a cool place to hang out during their Fridays! This space offers a variety of arts and crafts supplies, board games, card games, video games, snacks, and more.

## PARKS AND RECREATION VOLLEYBALL CLINIC



[tinyurl.com/register-for-rec](https://tinyurl.com/register-for-rec)

**Ages:** 13–18 years

**Location:** East Somerville Community School  
50 Cross St

**Contact:** Brooke Metivier, (857) 300-3272  
bmetivier@somervillema.gov

Tuesdays at 1pm on July 2nd and 9th

## PARKS AND RECREATION VOLLEYBALL LEAGUE FOR TEENS



[somervillerec.com](https://somervillerec.com)

**Ages:** 12–18 years

**Location:** East Somerville Community School  
50 Cross St

**Contact:** Brooke Metivier, (857) 300-3272  
bmetivier@somervillema.gov

FREE. Teens are invited to this 6-week volleyball league with a coach who will structure each weeks practice to help individual players learn skills, enhance their skills, and apply skills into game like drills and scrimmages! Registration is required.

## SOMERVILLE PUBLIC LIBRARY BOOK CLUBS FOR KIDS



[somervillepubliclibrary.org/kids](https://somervillepubliclibrary.org/kids)

**Location:** Central Library: 79 Highland Ave  
East Branch: 115 Broadway  
West Branch: 40 College Ave

**Contact:** Alison Mitchell, (617) 623-5000x2977  
amitchell@somervillema.gov

The Somerville Public Library currently hosts three book clubs for kids, in different age ranges. For more information, visit our events calendar.

## SOMERVILLE PUBLIC LIBRARY STORYTIMES



[somervillepubliclibrary.org/kids](https://somervillepubliclibrary.org/kids)

**Location:** Central Library: 79 Highland Ave  
East Branch: 115 Broadway  
West Branch: 40 College Ave

You can reach the Children's Department by calling (617) 623-5000 plus one of the following extensions:

Central Library: x2950  
East Branch: x2970  
West Branch: x2977



Storytimes usually follow the schedule below, but sometimes there are exceptions. Be sure to check our online calendar of events for the latest information.

### Central Library

Preschool Storytime: Thursdays at 10:30 a.m.  
Toddler Storytime: Fridays at 10:30 a.m.

### East Branch

East Branch Storytime: Wednesdays at 11:00 a.m.

### West Branch

Storytime in Spanish (all ages): Mondays at 11am  
Singalong (all ages): Tuesdays at 10am and 11am  
Baby Lapsit (birth–pre-walkers only):  
Thursdays at 11am  
Storytime (all ages): Fridays at 11am

## SOMERVILLE PUBLIC LIBRARY TEEN ROOM



[somerhillpubliclibrary.org/teens](http://somerhillpubliclibrary.org/teens)

**Ages:** 13–18 years

**Location:** 79 Highland Ave, Somerville

**Contact:** Ellen Jacobs, [ejacobs@somervillema.gov](mailto:ejacobs@somervillema.gov)  
(617) 623-5000 x2936

On the first floor of the Central Library, just to the left as you come in the front door, the Teen Room provides a variety of books, magazines, comics, graphic novels, and manga. We also have videogames for several platforms: Nintendo Switch, PS4/PS5, and Xbox One. Come hang out with your friends, play board games or card games, or use a desktop computer or a Chromebook.

## SOMERVILLE ROAD RUNNERS RUNNING CLUB



[srr.org/srr-kids](http://srr.org/srr-kids)

**Ages:** Rising Kindergarten–5th grade

**Contact:** [kids@srr.org](mailto:kids@srr.org)

FREE running program for Somerville kids. We aim to get kids out and the track and teach them all there is to love about running. We meet weekly on Wednesday evenings in the fall and spring. Each session runs for 8 practices. The program culminates in a free 5k race and pizza party. This is not a drop-off program, each child must have an adult on premises. Registration is required.

## SOMERVILLE YOUTH SOCCER SOCCER LEAGUE



[somerhillsoccer.org](http://somerhillsoccer.org)

**Ages:** 2–18 years

**Location:** Locations throughout Somerville (and surrounding towns for travel teams)

**Contact:** Jim Seavey, (617) 684-5737  
[executivedirector@somerhillsoccer.org](mailto:executivedirector@somerhillsoccer.org)

A recreational and developmental soccer league. In-town and travel leagues offered by our non-profit and volunteer run youth sports organization.

## THE DOJO @ SOMERNOVA



[somerhillnova.com/dojo/](http://somerhillnova.com/dojo/)

**Location:** 29 Properzi Way, Somerville

**Contact:** [info@somerhillnova.com](mailto:info@somerhillnova.com)

The Dojo @ Somernova is a youth-driven pilot designed to empower Somerville's future leaders with a platform and resources needed to co-create the city's 1st youth center.

## THE GROWING CENTER



[thegrowingcenter.org](http://thegrowingcenter.org)

**Location:** 22 Vinal Ave, Somerville

**Contact:** Lisa Brukilacchio,  
[lisa@thegrowingcenter.org](mailto:lisa@thegrowingcenter.org)

Check out our online calendar for free family friendly opportunities such as seasonal celebrations, open garden hours, nature based arts and crafts, music, theater, Stuffed Animal Campout, Gathering of the Fairies and more.



Low cost/  
Financial aid available



Transportation  
available

# Afterschool

## SCHOOL-YEAR PROGRAMS

### AROUND HEAR MUSIC FOR MYSTIC YOUTH

[aroundhear.org](http://aroundhear.org)

**Ages:** 5–7 years

**Location:** 530 Mystic Ave, Somerville

**Contact:** [aroundhearsomerville@gmail.com](mailto:aroundhearsomerville@gmail.com)  
(857) 928-7134

The Mystic Learning Center is an after-school program that serves local low-income families. During the school year, we offer regular introductory music classes where we explore a variety of music with our bodies, voices, instruments, and found objects, and create soundscapes, songs, and stories together out of our most interesting discoveries. These classes culminate in special, informal performances for Mystic Learning Center families and staff.

### BREAKTHROUGH GREATER BOSTON (BTGB) HIGH SCHOOL PROGRAM

[breakthroughgreaterboston.org/high-school-program/](http://breakthroughgreaterboston.org/high-school-program/)

**Ages:** 9th–10th graders

**Location:** Somerville High School  
81 Highland Ave, Somerville

**Contact:** [info@btgbmail.org](mailto:info@btgbmail.org)  
(617) 349-6647

FREE. BTGB's High School After School Program incorporates best practices and research-based evidence in supporting students as they transition to high school. We provide 9th and 10th-grade students with a structured afterschool academic environment where they can build good study habits, receive homework assistance, and continue to connect with their college-going cohort. One-on-one academic mentoring continues to be available for students throughout high school. Students who require additional support are matched with trained volunteers who serve as tutors in core subjects such as math, literature, science, and social studies.

### BREAKTHROUGH GREATER BOSTON (BTGB) MIDDLE SCHOOL PROGRAM

[breakthroughgreaterboston.org/middle-school-program/](http://breakthroughgreaterboston.org/middle-school-program/)

**Ages:** 7th–8th graders

**Location:** Somerville High School  
81 Highland Ave, Somerville

**Contact:** [info@btgbmail.org](mailto:info@btgbmail.org)  
(617) 349-6647

FREE. During 7th and 8th grade, Breakthrough Greater Boston students attend the weekly After School Program. The main goal of the After School Program is to continue inspiring a love of learning for students during the school year. Students receive homework assistance, one-on-one tutoring as needed, and take part in exciting hands-on STEAM workshops.

### EAST END HOUSE MIDDLE SCHOOL AFTERSCHOOL PROGRAM

[eastendhouse.org](http://eastendhouse.org)

**Ages:** Rising 6th–8th graders

**Location:** PAUS, 100 Putnam Avenue, Cambridge

**Contact:** Marsé Romero,  
[marse@eastendhouse.org](mailto:marse@eastendhouse.org)

FREE. Monday to Friday from 3pm–6pm. This program focuses on academics, social emotional learning, building community, gaining new experiences, and more. Students are offered snacks at the beginning of the program and a meal at the end of the program.

### ELIZABETH PEABODY HOUSE AFTERSCHOOL PROGRAM

[teph.org/school-age-interest](http://teph.org/school-age-interest)

**Ages:** 5–13 years

**Location:** 277 Broadway, Somerville

**Contact:** Nita Doss, [jdoss@teph.org](mailto:jdoss@teph.org)  
(617) 623-5510 x105

Monday to Friday from 2:30pm–5:30pm, 12pm–5:30pm Wednesday. Our afterschool program consists of a variety of activities that fall under the scope of STEM, social-emotional support, movement, media, and art. We provide your child with a wide range of programming opportunities. Join us this school year as we explore the deep depths of space, habitats on Earth, solve mysteries, learn about the environment, and how we can help our community!



## ENROOT IMMIGRANT YOUTH PROGRAM

[enrooteducation.org](http://enrooteducation.org)

**Ages:** Somerville High School Students

**Location:** Somerville High School  
81 Highland Ave, Somerville

**Contact:** Vania Loreda, (617) 209-9840  
vloreda@enrooteducation.org

Enroot is an after-school program for immigrant students. By joining Enroot you become part of an amazing community: You will improve your English, get help with your college applications, get professional experience, expand your community, and have a supporting community of people working to achieve your goals.

## GROUNDWORK SOMERVILLE AFTERSCHOOL GARDEN PROGRAMMING

[groundworksomerville.org](http://groundworksomerville.org)

**Ages:** Kindergarten–5th graders

**Contact:** [schoolgardens@groundworksomerville.org](mailto:schoolgardens@groundworksomerville.org)

Groundwork Somerville provides year-round after-school garden and nature-based programming. Students not only maintain their school garden, but also explore science, art, culture, and environmental topics that matter to them.

## GROUNDWORK SOMERVILLE GREEN TEAM: BIKING DIVISION

[groundworksomerville.org/programs/green-team/](http://groundworksomerville.org/programs/green-team/)

**Ages:** 14–18 years

**Location:** 15 Properzi Way, Somerville

**Contact:** Kenzie Ballard,  
[greenteam@groundworksomerville.org](mailto:greenteam@groundworksomerville.org)

In collaboration with Somerville, Groundwork Somerville has a new subset of the Green Team – the Biking Division. Our Biking Division is a team of 6 teenagers who are paid to learn about bike safety and repair. The teens fix and earn their very own bikes and fix and repair bikes to give to community members.



## MYSTIC LEARNING CENTER AFTERSCHOOL PROGRAM

[mysticlearningcenter.org](http://mysticlearningcenter.org)

**Ages:** 5–13 years (up to 16 years for youth with disabilities)

**Location:** 530 Mystic Ave, Somerville

**Contact:** Tracey Stearns,  
[info@mysticlearningcenter.org](mailto:info@mysticlearningcenter.org)

The program is designed to enhance the educational, emotional, and social development of children in a structured program designed to expand their interests and horizons, and to develop positive attitudes toward others. Runs every day and on half days. Walking pick-up from Healey School.

## PARKOUR GENERATIONS INTERNSHIP FOR TEENS

[pkgenboston.com/intern](http://pkgenboston.com/intern)

**Ages:** Rising 9th–12th graders

**Location:** The Dojo @ Somernova

**Contact:** [boston.info@parkourgenerations.com](mailto:boston.info@parkourgenerations.com)  
(617) 302-7542

Learn parkour and build your resume at the same time! A weekly school-year program focused on learning 21st century professional skills as well as parkour skills through a mix of project-based learning modules and group challenges. Opportunities for additional responsibilities and to earn a stipend available to Somerville residents.

## PARKS AND RECREATION MIDDLE SCHOOL INTRAMURAL SPORTS

[tinyurl.com/register-for-rec](http://tinyurl.com/register-for-rec)

**Ages:** 6th–8th graders

**Location:** To be determined (in Somerville)

**Contact:** Marco Osoy, [mosoy@somervillema.gov](mailto:mosoy@somervillema.gov)  
(617) 625-6600 ext. 2990

Interested in representing your school on their Middle School Intramural Team? This is a free program where you just need to register to participate. This program focuses on the team sport of basketball. Not only will your child learn more understanding of the game, but they will learn life skills and lessons that will last a lifetime.

## PARKS AND RECREATION POWDERHOUSE TEEN CENTER



[tinyurl.com/powderhouse-teen-center](https://tinyurl.com/powderhouse-teen-center)

**Ages:** 12–18 years

**Location:** 838 Broadway, Somerville

**Contact:** Brooke Metivier, (857) 300-3272  
bmetivier@somervillema.gov

The Powderhouse Teen Space is an extension of both the Art Haus and Umbrella Programs. The Powderhouse Teen Space is a designated safe space for all LGBTQIA+ teens, and allies, and includes Somerville Parks and Rec staff supervision, video games, board games, card games, open arts and crafts closet, snacks, television, and more! Teens can use this space for non-physical activities and can socialize with other teens and staff!

## PARKS AND RECREATION SPRING ATHLETIC PROGRAMS



[somervillerec.com](https://somervillerec.com)

**Location:** To be determined (in Somerville)

**Contact:** Marco Osoy, mosoy@somervillema.gov  
(617) 625-6600 ext. 2990

Look forward to new programs in Spring 2025! Archery Clinics, Tot Soccer, Tennis Clinics and Golf Clinics are coming to Somerville Parks and Recreation

## PARKS AND RECREATION VOLLEYBALL LEAGUE



[tinyurl.com/register-for-rec](https://tinyurl.com/register-for-rec)

**Ages:** 13–18 years

**Location:** Edgerly School, 3 Otis St, Somerville

**Contact:** Brooke Metivier, (857) 300-3272  
bmetivier@somervillema.gov

Mondays 6-8 pm, dinner is served at 6-6:30 pm in the cafeteria for both players and spectating teens. Teens will create a team of either 4 or 5 players and will enter into this free volleyball league. Each week, teams will have a scheduled game time and team they are versing. Registration is required.

## PARTS AND CRAFTS AFTERSCHOOL



[partsandcrafts.info](https://partsandcrafts.info)

**Ages:** 7–13 years

**Location:** 561 Windsor St., Suite B402, Somerville

**Contact:** [contact@partsandcrafts.org](mailto:contact@partsandcrafts.org) (617) 207-8016

In our makerspace programs we encourage kids to play, think, make, and learn through the exploration of the arts, science, computer programming, and engineering – a cluster of disciplines we refer to as the creative application of technical skills. We provide afterschool, half day, school alternative and weekend programming.

## SOCCER WITHOUT BORDERS AFTERSCHOOL PROGRAM



[soccerwithoutborders.org](https://soccerwithoutborders.org)

**Ages:** 11–14 years

**Location:** Winter Hill Community School Field

**Contact:** Bruno Contreras,  
[bruno@soccerwithoutborders.org](mailto:bruno@soccerwithoutborders.org)

FREE. Tuesdays and Thursdays from 2:30-4pm. 35-40 students in the fall, winter and spring can participate in the soccer program, academic support, community activities and team building. We prioritize multi-language learners to practice English in a lower stakes environment than the classroom.

## SOMERVILLE MEDIA CENTER AFTERSCHOOL PROGRAMS



[somervillemedia.org](https://somervillemedia.org)

**Ages:** 8–14 years

**Location:** To be determined (in Somerville)

**Contact:** Evan Tingle, [etingle@scatvsomerville.org](mailto:etingle@scatvsomerville.org)

A variety of afterschool programs and classes throughout the school year. See website for more info.



SOMERVILLE PUBLIC SCHOOLS  
**ALL-CITY ROBOTICS AND  
COMPUTER SCIENCE CLUBS**



[tinyurl.com/middlegrades-robotics-programs](https://tinyurl.com/middlegrades-robotics-programs)

**Ages:** 10+ years

**Location:** Somerville High School, Argenziano,  
East Somerville, Healey, Kennedy,  
West Somerville, Winter Hill

**Contact:** Jason Behrens,  
[jbehrens@k12.somerville.ma.us](mailto:jbehrens@k12.somerville.ma.us)

Join the Somerville Robotics League, Girls Who Code, FIRST Lego League, or the FIRST Robotics Competition! Participate in an all-city robotics competition and showcase! No experience necessary. Students in grades 5-8 will learn from high school students and teachers about creating robots with LEGO, and can choose between creative and artistic robotics showcases and competitive robotics challenges. Students in grade 8 have the opportunity to join the high school robotics team.

SOMERVILLE PUBLIC SCHOOLS  
**EL SISTEMA AFTERSCHOOL  
MUSIC PROGRAM**



[tinyurl.com/el-sistema-somerville](https://tinyurl.com/el-sistema-somerville)

**Ages:** 3rd–8th graders

**Location:** East Somerville Community School  
50 Cross Street, Somerville

**Contact:** Evan Perry, [eperry@k12.somerville.ma.us](mailto:eperry@k12.somerville.ma.us)  
(617) 625-6600 x3716

Monday to Friday from 2:30pm–5:30PM (Including early release Wednesdays). Each student will receive 2 daily music classes, 1 daily homework session and weekly specific and individualized schedule. Cost: \$145/week; \$29/ day. Financial assistance on a sliding scale is available for families who qualify. For information regarding the documents needed for financial aid consideration, please contact the El Sistema Director.

SOMERVILLE YMCA  
**AFTERSCHOOL PROGRAM**



[somervilleymca.org](https://somervilleymca.org)

**Ages:** Kindergarten–6th graders

**Location:** 15 Webster Ave (Grades Kindergarten–3)  
and 17 Franklin Street (Grades 4–6)

**Contact:** Francesca Ciccone,  
[fciccone@somervilleymca.org](mailto:fciccone@somervilleymca.org)

Monday to Friday from 2:45–6pm. Open at 1:45pm on Prospect Hill Academy (PHA) early release Wednesdays. School vacation week hours are from 7:45am–5:45pm. Our program focuses on keeping kids engaged through gym, STEAM enrichment activities, Field trips, outdoor play and Social Emotional Learning Activities and homework help. Child and Adult Care Food Program (CACFP) approved snacks served daily. Cost: \$30 per day for a regular afterschool day and \$50 per day for an early release or full day. EEC Vouchers are accepted.

SOMERVILLE YMCA  
**PRE-KINDERGARTEN/KINDERGARTEN  
OUT OF SCHOOL TIME (OST) PROGRAM**



[somervilleymca.org](https://somervilleymca.org)

**Ages:** 4–6 years old and enrolled in Pre-Kindergarten/Kindergarten school-based program

**Location:** 97 Highland Avenue, Somerville

**Contact:** Francesca Ciccone,  
[fciccone@somervilleymca.org](mailto:fciccone@somervilleymca.org)

An Afterschool Program for children that attend some of the SPS Pre-Kindergarten, Elementary Schools and Prospect Hill Early Childhood Schools (PHACS). After-school Transportation is provided from Argenziano, Capuano, and PHACS. The program provides swimming, gym, STEAM enrichment activities, field trips, outdoor play and Social Emotional Learning Activities. CACFP approved snacks served daily. Cost: \$50 per day for a regular afterschool day and \$70 per day for an early release or no school days. EEC Vouchers are accepted.



Low cost/  
Financial aid available



Transportation  
available

SOMERVILLE YMCA  
**SCHOOL AGE CHILD CARE (SACC)  
AFTERSCHOOL PROGRAM**



[somervilleymca.org](http://somervilleymca.org)

**Ages:** Rising Kindergarten–7th graders

**Location:** 101 Highland Avenue, Somerville

**Contact:** Francesca Ciccone,  
[fciccone@somervilleymca.org](mailto:fciccone@somervilleymca.org)

Monday to Friday from 2:35–6pm, open at 12pm on early release Wednesdays. School vacation week hours are from 7:45am–5:45pm. The program focuses on keeping kids engaged through swimming, gym, STEAM enrichment activities, Boys and Girls groups. Classrooms are separated for Kindergarten-2 and 3-7th grades. Child and Adult Care Food Program (CACFP) approved snacks served daily. Afterschool Transportation is provided from the following schools: Argenzia-  
no, Brown, Capuano, East Somerville, Healey, Kennedy, West Somerville, Winter Hill (Edgerly) and Prospect Hill Early Childhood Schools (PHACS). Evening transportation home is available for those families living in a Somerville Housing Authority (SHA) Complex Only (Clarendon Hill Towers, Mystic and North Street locations). Limited financial assistance is available during the school year for those families meeting income eligibility guidelines. Cost: \$40 per day for regular afterschool days-\$60 per day for early release and no school days. Cost includes one-way transportation on all school days. Online registration begins March 1st.

SOMERVILLE YOUTH HOCKEY  
**HOCKEY PROGRAM**



[somervilleyouthhockey.org](http://somervilleyouthhockey.org)

**Ages:** 3–18 years

**Location:** Veterans Memorial Rink  
570 Somerville Ave

**Contact:** [syhaexecboard@gmail.com](mailto:syhaexecboard@gmail.com)

Somerville Youth Hockey Association (SYHA) offers learn to skate and learn to play hockey programs and competitive hockey teams for all abilities. Competitive hockey for older children begins in late August.







# Summer Resources & Activities

## FOR FAMILIES WITH CHILDREN OF ALL AGES

### EVENTS/GROUPS

#### THE GROWING CENTER

The Growing Center has a variety of activities and events for all ages including: Playgroups, Story-Time, nature play, music, gardening and more.

[thegrowingcenter.org](http://thegrowingcenter.org)

#### SOMERVILLE ARTS COUNCIL

Local community events such as Artbeat, Somer-Streets, PorchFest and more!

[somervilleartsCouncil.org](http://somervilleartsCouncil.org)

#### SOMERVILLE PUBLIC LIBRARY

Check out the library for: Summer Reading and other events including: sing-alongs, book groups for kids, and museum passes.

[somervillepubliclibrary.org](http://somervillepubliclibrary.org)

#### SOMERVILLE PARKS & RECREATION DEPARTMENT

Visit the Somerville Parks & Recreation Department's website for a variety of summer programs

[somervillerec.com/info/activities/](http://somervillerec.com/info/activities/)

### POOLS

#### KENNEDY SCHOOL POOL

Classes and family swim from 6 months up.

#### DILBOY MEMORIAL SWIMMING & WADING POOL

Alewife Brook Parkway, (617) 625-6600 x2980

(Managed by the City of Somerville, fee charged)

#### FOSS PARK: DCR LATTI BROTHERS MEMORIAL SWIMMING & WADING POOL

235 Broadway, Somerville, (617) 666-9236

### PARKS AND PLAYGROUNDS

#### WATER PLAY FEATURES, SPRINKLERS & POOLS

Cool off in Somerville at one of the 14 City parks that have water play features.

[tinyurl.com/somerville-parks](http://tinyurl.com/somerville-parks)

#### FIND A SOMERVILLE PARK NEAR YOU

[somervillehub.org](http://somervillehub.org)



**SOMERVILLE**  
PUBLIC SCHOOLS

**ONE**  
**Somerville**  
**EVERY** child



# Summer Resources & Activities

## FOR FAMILIES WITH CHILDREN OF ALL AGES

### FARMERS MARKETS / OTHER FOOD RESOURCES

- **The Farmers Market in Davis Square**  
Wednesdays: 12:00PM to 6:00PM  
May to November, HIP available.  
[massfarmersmarkets.org/davis](http://massfarmersmarkets.org/davis)
- **The Farmers Market in Union Square**  
Saturdays 9:00AM to 1:00PM  
May to October, HIP and SNAP match available.  
[unionsquaremain.org/events](http://unionsquaremain.org/events)
- **Somerville Mobile Farmers Market**  
Stops at SCALE, East Somerville Public Library, Clarendon Hill Towers, and Mystic Housing. SNAP/HIP, Senior and WIC farmers market coupons accepted. HIP, SNAP match, and other food assistance discounts available,  
[tinyurl.com/somervillemobilefarmersmarket](http://tinyurl.com/somervillemobilefarmersmarket)
- **Farmers Markets in Cambridge**  
[cambridgema.gov/CDD/parks/farmersmarkets](http://cambridgema.gov/CDD/parks/farmersmarkets)
- **Find information** about daily community meals, food pantries and other great local resources at:  
[somervillefoodsecurity.org](http://somervillefoodsecurity.org)



### FAMILY OUTINGS

#### FREE FRIDAYS

- Every Friday, June–August, a number of attractions/museums are free to the public. Offered by Highland Street Foundation. For more info:  
[highlandstreet.org](http://highlandstreet.org)

#### ZOOS

- **Franklin Park Zoo – Boston**  
[zoonewengland.org](http://zoonewengland.org)
- **Stone Zoo – Stoneham**  
[zoonewengland.org](http://zoonewengland.org)



### BEACHES/ BIKE PATHS/ EVENTS/ FARMS /WALKS

- **Boston HarborWalk**  
[tinyurl.com/boston-harbor-walk](http://tinyurl.com/boston-harbor-walk)
- **Boston Public Garden – swan boats**  
[tinyurl.com/boston-public-garden](http://tinyurl.com/boston-public-garden)
- **County and State Fairs**  
[tinyurl.com/mass-county-fairs](http://tinyurl.com/mass-county-fairs)
- **Department of Conservation and Recreation Events**  
[mass.gov/visit-massachusetts-state-parks](http://mass.gov/visit-massachusetts-state-parks)
- **Drumlin Farm – Lincoln, MA**  
[tinyurl.com/explore-mass-audubon](http://tinyurl.com/explore-mass-audubon)
- **Institute of Contemporary Art has free family events the last Saturday of each month!**  
[icaboston.org/calendar](http://icaboston.org/calendar)
- **Massachusetts Beaches**  
[visit-massachusetts.com/state/beaches/](http://visit-massachusetts.com/state/beaches/)
- **Minuteman Bikeway**  
[traillink.com/trail/minuteman-bikeway.aspx](http://traillink.com/trail/minuteman-bikeway.aspx)
- **Museum of Fine Arts:**  
[mfa.org](http://mfa.org)
- **Walk Boston – download maps here**  
[walkmass.org/resources/maps/](http://walkmass.org/resources/maps/)
- **Middlesex Fells Reservation:**  
[friendsofthefells.org](http://friendsofthefells.org)



**For more info: [somervillehub.org](http://somervillehub.org)**

