



**PARTNERSHIP FOR
YOUNG CHILDREN**

Expanding Early
Education Opportunities



Multi-tiered System of Support Menu of Services and Support

The Somerville Partnership for Young Children

2023 / 2024

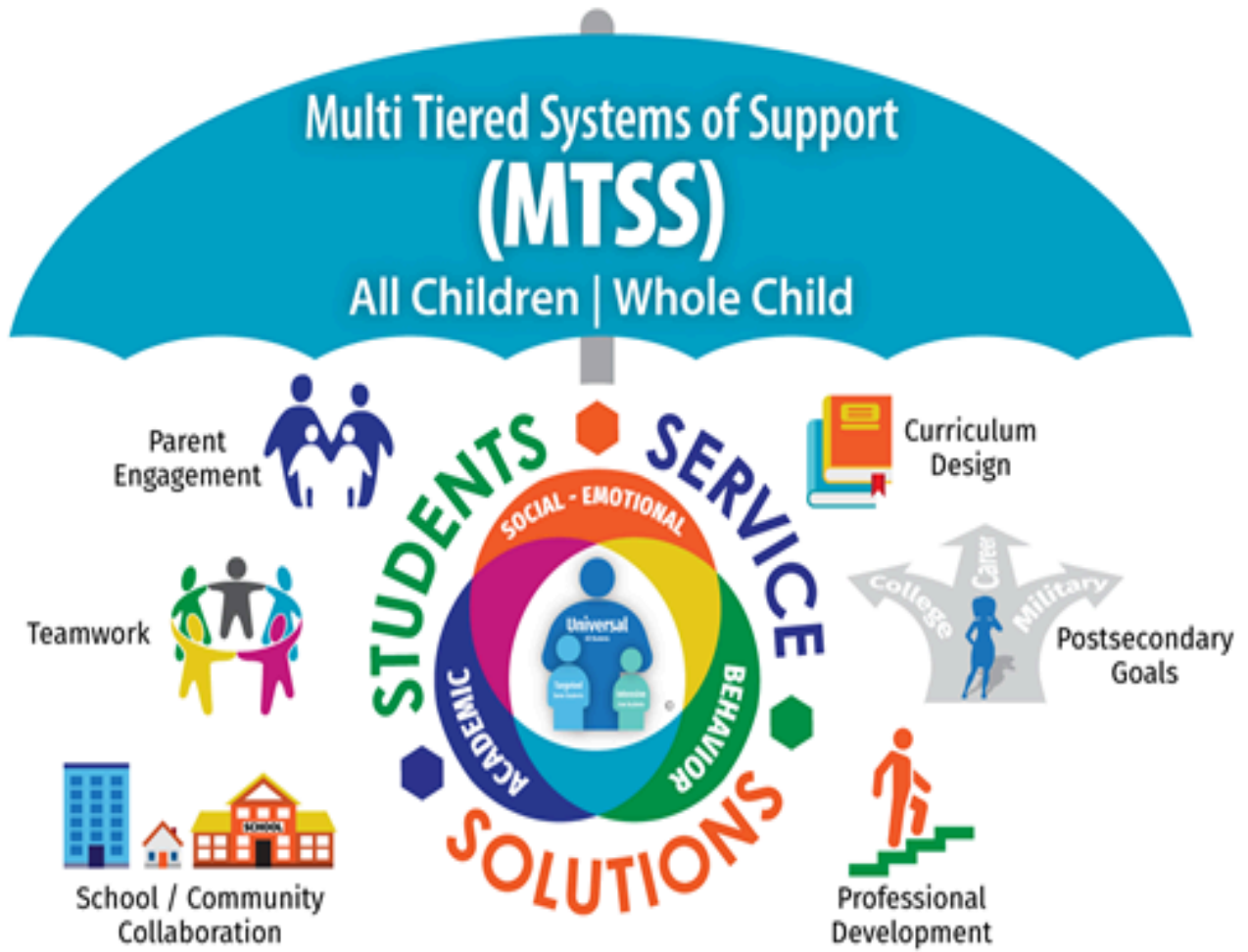
Table of Contents

<u>About this Menu of Referrals and Support</u>	3
<u>Birth-3 support (Early Intervention)</u>	4
<u>What is MTSS for 3-5 years old</u>	5
<u>MTSS Referral Flow Chart</u>	6
<u>MTSS Universal Screening</u>	7
<u>SPYC Itinerant Specialist Team</u>	8
<u>Somerville Public School Special Education Department / Child Find Screening</u>	9
<u>Somerville Special Education Parent Advisory Council</u>	10
<u>Somerville Department of Health and Human Services</u>	11-12
<u>Developmental Evaluation for Young Children</u>	13-16
<u>Family Ties of Massachusetts</u>	17
<u>Boston Children’s Hospital (Special Services)</u>	18
<u>Federation for Children with Special Needs</u>	19
<u>Massachusetts Advocates for Children</u>	20
<u>Eliot Family Resource Center</u>	21-22
<u>The Home for Little Wanderers</u>	23-24
<u>Early Years Project</u>	25-26
<u>Riverside Community Care</u>	27
<u>Somerville Resources Handbook</u>	28

PREVENTION
for all Students

ENRICHMENT
for all Students

INTERVENTION
for all Students



What is the Menu of Referrals and Resources and why was it created?

The Menu of Support and Referrals was created to guide and help children and caregivers to receive comprehensive care and equitable access to early childhood education and care.

The Menu of Support and Referrals is a tool for early childhood professionals to access current and updated resources to support children and families. It contains a comprehensive list of services and supports that are available in the community. It is a resource to help a provider target the type of specific support a child and/or family may benefit from, based on their individual needs.

Aligned with the MTSS framework, our focus is to provide each individual child with an array of resources appropriate for their age and stage. This creates a pathway for them to thrive and succeed academically, and nourishes the life skills needed to become confident, socially engaged and independent adults in the future.

This Menu of Referral and Support may change as we continue to improve! If you notice anything that should be updated, know of additional resources, or have questions about this resource, please contact the Itinerant Access Specialist, Katie Gately Gehant at kgegant@k12.somerville.ma.us or 617-625-6600 ext. 3639



Birth - 3 support (Early Intervention)

Massachusetts Early Intervention (EI) is a program for infants and toddlers (birth to 3 years old) who have developmental delays or are at risk of a developmental delay.

Early Intervention serves Massachusetts families with children under the age of three who are not reaching age-appropriate milestones, diagnosed with certain conditions, or have medical or social histories which may put them at risk for a developmental delay. EI services are meant to help support families and caregivers and to enhance the development and learning of infants and toddlers.

Why reach out to Early Intervention?

If a child is not meeting the milestones for their age, or if you think there could be a problem with the way the child plays, learns, speaks, acts, and moves even after you have provided opportunities to learn skills through targeted activities, a referral to Early Intervention should be recommended. Caregivers can self-refer their child.

Cambridge/Somerville Early Intervention at Riverside

<https://www.riversidecc.org/child-family-services/early-childhood-services/early-intervention/>

Cambridge and Somerville: 617-629-3919, ext. 5755 or cambsomeireferrals@riversidecc.org

12 Tyler Street - Somerville, MA 02143

MTSS for 3-5 years olds

The Massachusetts Multi-tiered System of Support (MTSS) is a framework used to provide every student access to high-quality inclusive learning experiences. The Somerville Partnership for Young Children has adopted the MTSS framework to meet children where they are and provide them the support they need to progress, stay on track, and thrive.

What kind of support can MTSS provide?

There are universal supports available to all children through a differentiated, diverse, linguistically responsive, and culturally sustaining curriculum. SPYC provides universal supports through:

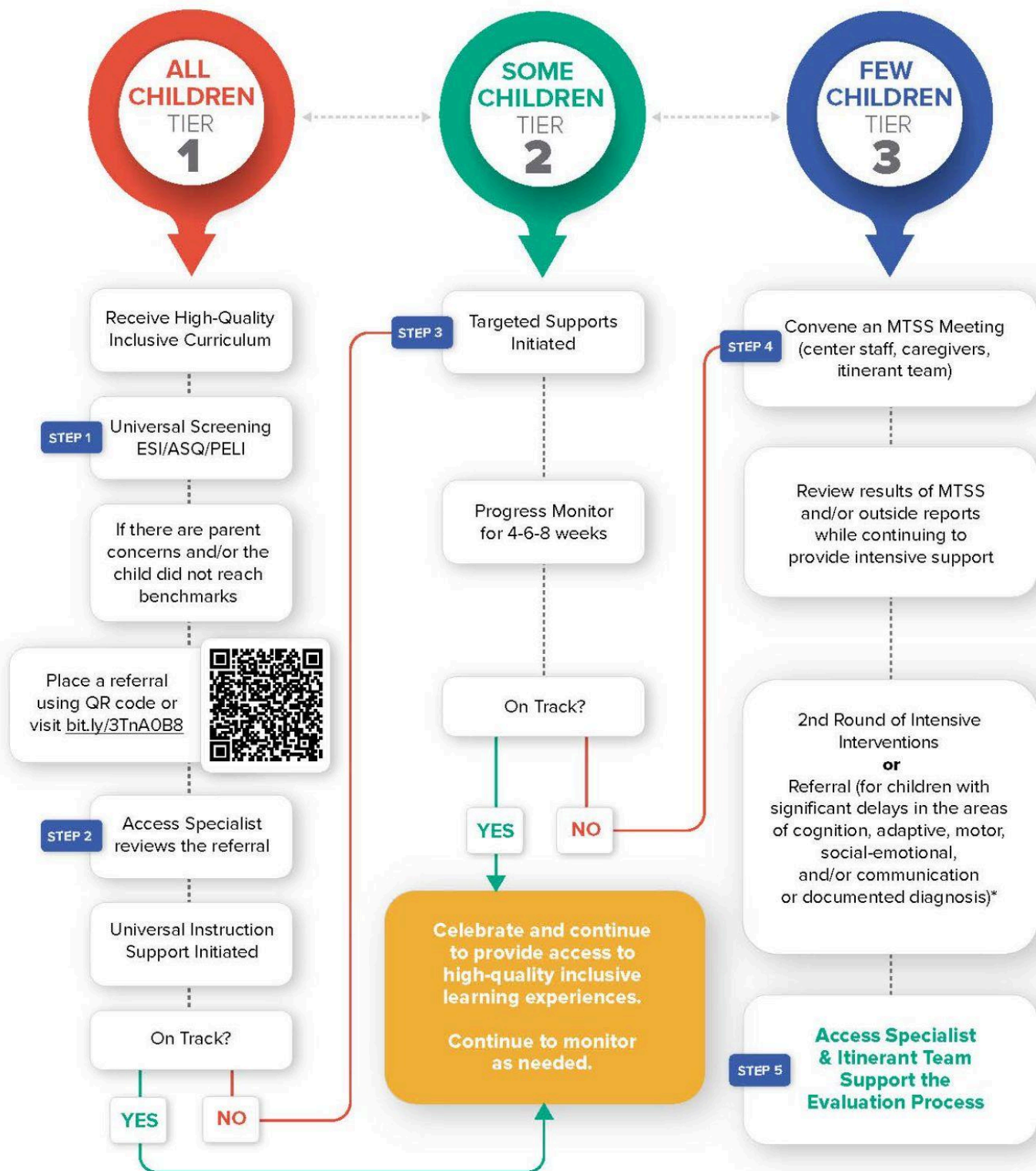
- SEE Every Child teaching and learning framework
- Diverse and culturally relevant curriculum materials
- Teacher and director coaching and professional development
- Universal screening
- Classroom observations by experts through an itinerant specialist team in the areas of communication, cognition, play skills, speech and language and behavior and social emotional development.

When needed, an additional level of support can be provided in **small groups**. Some children may require additional opportunities to practice the skills necessary to access core instruction. This second chance to practice skills may be all they need to master concepts. Based on screening results, classroom observation and/or teacher referral, caregiver concerns, small group instruction can be provided by the SPYC itinerant specialist team in the following areas:

- Speech and language skills
- Social and play skills
- Behavioral skills/self-regulation

Sometimes children need more intensive support through focused teaching and learning, **individually or in very small groups**. It is important to note that none of these services fall under the umbrella of special education, but are all on the continuum of general education best practices.

Action Steps for Educators



*Refer to Menu of Services and Referral for Additional Resources.

MTSS Universal Screenings

In accordance with the Individuals with Disabilities Act (IDEA 2004) and Massachusetts Special Education regulations 603 CMR 28.00, the Somerville Public Schools provides screenings and evaluations for all children residing in Somerville, MA between the ages of 3 and 21 to determine eligibility for special education services. SPYC's Multi-tiered System of Support includes free screening and monitoring using the following tools:

The Early Screening Inventory, Third Edition (ESI™-3)

- This screening checks how a child is growing and developing through simple games, fine motor, and early math activities. It helps teachers support children with their specific needs. Sometimes, the screening shows areas where a child may need more testing or help. The screening is quick and most children enjoy the experience. The screening will take place at the child's program during the day by a teacher or SPYC consultant.

Ages & Stages Questionnaires: Social-Emotional, Second Edition (ASQ:SE-2)

- ASQ:SE-2 is a set of questionnaires that ask about how young children behave and develop socially and emotionally. It helps make sure that children are developing in these areas at the right pace. It allows the caregiver to celebrate a child's progress and address any concerns as early as possible. ASQ:SE-2 can help you see a child's strengths in social and emotional areas and find areas where they may need some extra support. The screening is completed by the caregiver and results are reported to the center.

Preschool Early Literacy Indicators Pilot

- The Preschool Early Literacy Indicators (PELI) screener measures alphabet knowledge, vocabulary and oral language, phonological awareness, and listening comprehension through a storybook format. Early Literacy Screeners help teachers support children's literacy at the earliest stages of learning when intervention can be most successful. Classrooms participating in the GLEAM grant will be piloting this screener in 23-24. The screener is given three times a year and teachers will use the results to support their teaching. The screening will take place at the child's program during the day by a teacher or SPYC consultant.

Itinerant Specialist Staff

At times, SPYC staff or consultants hired by the Commonwealth Preschool Partnership Initiative, a state funded grant, will observe in an SPYC classroom in order to support children and teachers. These specialists can help children in areas such as speech and language, fine motor skills, social interactions, and share information about behavioral interventions, as well as suggestions to help individual children practice skills for success in school.

What is an Itinerant Team?

An Itinerant Team is made up of highly specialized educational clinicians. The itinerant specialist provides specialized individual or group instruction and/or indirect services to preschool students. Services are provided on an itinerant basis, meaning the itinerant specialist travels to the childcare or educational setting where the child attends during the day.

What can an Itinerant Specialist do for the children in my classroom?

Depending on a child's need for support, an itinerant specialist may begin by conducting a classroom observation in the areas of communication, cognition, play skills, speech and language, behavior and/or social-emotional development.

Some children may require additional opportunities to practice the skills necessary to access core instruction. When needed, an additional level of support can be provided in small groups. This second exposure to concepts may be all they need to master skills. Based on screening results, classroom observation and/or teacher referral, caregiver concerns, small group instruction can be provided by the SPYC itinerant specialist team. Sometimes children need more intensive support through focused teaching and learning, in this case, the itinerant specialist team will work individually with a child.

The itinerant specialist can also provide students with an Individualized Education Program (IEP) through the Somerville Special Education Department, with special education services. Integrated services weave special education goals into a child's daily schedule so that skills develop in naturally occurring activities and adults maximize the sharing of knowledge and methods across disciplines.

Who are the Itinerant Team members?

Katie Gately Gehant - Itinerant Early Childhood Access Specialist and Coach
Massachusetts Licensed School Psychologist and Special Education Teacher

Liz Dean - Itinerant Speech and Language Therapist
Massachusetts Licensed Speech and Language Pathologist

Nyrlee Chhotu - Itinerant Behavior Specialist
Massachusetts Board Certified Behavior Analyst

These itinerant team members are all certified in their prospective areas of expertise and employed by the Somerville Public Schools.

Child Find: Somerville Public School Special Education Department

www.somerville.k12.ma.us/district-departments/special-education

In accordance with the Individuals with Disabilities Act (IDEA 2004) and Massachusetts Special Education regulation 603 CMR 28.00, the Somerville Public Schools provides screenings and evaluations for all children residing in Somerville, MA between the ages of 3 and 21 to determine eligibility for special education services. Any parent, caregiver, or teacher may refer the student for evaluation if they suspect the presence of a disability that may preclude the child from progressing effectively in a general education program. This notice applies to all children residing in Somerville, MA who attend either public or private schools.

If you suspect that a child in your care may be in need of special education services, please contact the Special Education Department at 617-625-6600.

Special Education Department Administration

- Ildefonso Arellano, Director of Special Education, 617-625-6600 x6810
- Marisa MacDonald, Assistant Director of Special Education for Instruction and Programming, 617-625-6600 x6815
- Will Verbits, Assistant Director of Special Education for Services and Supports, 617-625-6600 x6807

Special Education Department Heads/Coordinators

- Susan Gibbons, Department Head, Capuano School, 617-625-6600 x3624

Somerville Special Education Parent Advisory Council

<https://somerville.k12.ma.us/district-departments/special-education/ssepac-special-education-parent-advisory-council>

The Special Education Parent Advisory Council or SSEPAC connects families whose children receive special education services in the Somerville Public Schools.

The mission of the Somerville Special Education Parent Advisory Council is to work for understanding of respect for, and support of all children with disabilities in the Somerville community. To that end, it will work to:

- Promote a network of parents of children with special needs for information-sharing purposes.
- Provide informational forums (fora) to parents, educators, students, and professionals surrounding issues related to special needs and special education.
- Work with the Director of Special Education and School Committee on operations and development of special education programs, parent and teacher training needs, and policy advocacy.
- Promote communication between SEPAC members and related local, state, and national organizations.
- Promote communication and programs within our community to encourage understanding, acceptance, and inclusion of children with special needs.
- Promote the interest of special needs parents regarding matters that come before the Somerville Public School system.
- SEPAC will not make political endorsements. This, however, does not preclude SEPAC from participating in advocacy for proposed legislation or discussions on issues affecting general or public education in Somerville or the Commonwealth of Massachusetts.

SOMERVILLE SSEPAC OFFICERS:

Michele Lippens, Director

Julia Gibney-Toof, Co-Secretary

Beth MacRae, Co-Secretary

- Find the most recent information and events about Somerville SEPAC at their website: <http://somervillesepac.org>
- Email SSEPAC: Somervillesepac@gmail.com
- Join the Yahoo Group: somspedpac-subscribe@yahoogroups.com
- Follow SSEPAC on Facebook: www.facebook.com/Somerville-SEPAC

PARENT'S NOTICE OF PROCEDURAL SAFEGUARDS

If a student is eligible for special education, the school district must provide a free appropriate public education, commonly referred to by the acronym FAPE, working in partnership with the student's parents/guardians. Please read the Parent's Notice of Procedural Safeguards, available on the Department of Elementary and Secondary Education's website in multiple languages.

Somerville Department of Health and Human Services

<https://www.somervillema.gov/support>

The Human Services Division of the City of Somerville Department of Health and Human Services provides a variety of supportive services to the Somerville Community to promote health and well-being. These are available at no cost to Somerville residents. (Children, Youth and Adults up to age 59).

Why reach out to the Somerville HHS Case Management/ Mental Health?

- Are you in need of support navigating social service systems?
 - Falling behind on your rent?
 - Trouble accessing basic needs?
- Would you like to learn more about different benefit assistance programs that you may be eligible for?

Team:

2 - Case Managers (Spanish and Portuguese language capacity; for other languages we use interpreters through Language Line)

2 - Social Workers

2 - Youth Specialist

1 - Mental Health Services Manager

Services provided:

- **SDOH (Social Determinants of Health) screening**
- **Case management-** coordinator to connect clients to the services and resources they need to overcome life challenges. Case Managers work closely with our supportive counseling team under the Human Services division within the City of Somerville.
 - Benefit Assistance
 - Transitional Aid to Families with Dependent Children (TAFDC) and Emergency Aid to the Elderly, Disabled and Children (EAEDC) are administered through the Department of Transitional Assistance (DTA).
 - Financial Management
 - Health insurance – help identify options
 - Education, training and employment opportunities
 - Utility Assistance
 - Information and Referral to Service
 - Referrals to city wide programs/supports
- **Supportive Counseling** team consists of social workers and youth specialists. Deliver services and practical support designed to help clients cope with and overcome difficult situations such as unemployment, homelessness, and social injustice.
 - May also include some case management.
 - Safety/Clinical Assessment (school only)
 - Collaboration with other HHS teams on Mental health skill workshops
 - Problem Solving interventions.
 - Facilitating support groups (coming soon)
- **How do you get connected?**
 - Call 311
 - Visit <https://www.somervillema.gov/support>



Human Services

City of Somerville
Department of Health and Human Services



The City of Somerville's Human Services Division provides a range of services to the community to support health and wellness. All services are available to Somerville residents of all ages at no cost. We are able to provide assistance with:

- Brief Counseling Support
- Case Management
- Support Navigating School Systems
- Information and Referrals to Services including Mental Health Care, Utility and Benefits Assistance, Housing Support, Health Services, Employment Support, Financial Management Support, Legal Assistance, and Reading and Language Education.

somervillema.gov/support

Contact Us

If you are seeking services or you are a service provider, community partner, or parent or guardian of someone in need of services, please submit a referral at somervillema.gov/support, use the QR code below, or call 311 at 617-666-3311



somervillema.gov/support

50 Evergreen Ave., Somerville, MA 02145

Developmental Evaluations for Young Children

Developmental evaluations are beneficial because caregivers can find the right strategies to best help their child and secure services. Evaluations by a Developmental Specialist or team help identify developmental, emotional and behavioral challenges for children, which can include autism spectrum disorders, attention deficit hyperactivity disorder, and learning difficulties. The specialist might be a Developmental Pediatrician, Developmental Psychologist, Pediatric Neuropsychologist or team that includes more than one of these providers. They evaluate the child's behaviors, medical and mental health histories, answer targeted questions, developmental milestones, information provided by the parents or caregivers and other factors to diagnose an underlying condition or clarify a diagnosis. They might do specific tests to look at thinking, learning, behavior, and social skills. At the end of the assessment, the specialist will discuss the findings and recommendations. Caregivers will receive a detailed report that can be shared with their child's pediatrician and childcare setting.

There are often very long wait lists for getting an evaluation. When caregivers call for an appointment, advise them to ask what the current wait period is. We suggest that the child be placed on the waitlist of a few places they are interested in. When their name comes up, the caregiver will have the opportunity to accept an earlier appointment.

Why reach out to a Developmental Specialist for an Evaluation?

If a child is identified with developmental, emotional and behavioral challenges, including signs of autism spectrum disorders, attention deficit hyperactivity disorder and learning difficulties, a more comprehensive developmental evaluation may be needed to medically diagnose the child's condition and consequently provide the child with a more targeted system of support. The first step for a caregiver will be to reach out to your pediatrician. The itinerant team can support families in this process, if needed.

Atrius Health - Developmental and Behavioral Pediatrics	20 Wall St. Burlington, MA 01803 https://www.atrusheralth.org/specialties-and-services/developmental-and-behavioral-pediatrics Type of Assessment: Developmental Assessment Referral process: 781-221-2774. Your Atrius pediatrician will provide details. Insurance: Must get your health care at Atrius Health
Beacon Assessment Center	300 East Main St. Milford MA. 01757 https://www.beaconassessmentcenter.com/locations/milford/ Type of Assessment: Autism Evaluation Referral process: 508-478-0587 x256 Insurance: Most insurances except for Tricare. Accepts MassHealth

<p>Boston Child Study Center</p>	<p>729 Boylston Street, Boston, MA, 02116 6 Union Street Natick, MA, 01760</p> <p>https://bostonchildstudycenter.com</p> <p>617 800-9610 for both locations</p> <p>Type of Assessment: Developmental Assessment. Early Autism Developmental Clinic.</p> <p>Insurance: Prior authorization for out of network care reimbursement</p>
<p>Boston Medical Center</p>	<p>Developmental and Behavioral Pediatrics 850 Harrison Ave. Boston, MA 02118</p> <p>https://www.bmc.org/pediatrics/developmental-behavioral-pediatrics</p> <p>Type of Assessment: Developmental Assessment</p> <p>Referral process: 617-414-4841</p> <p>Insurance: All medical insurances including MassHealth</p>
<p>Children's Hospital Boston</p>	<p>Developmental Medicine Clinic 2 Brookline Place, Brookline, MA. 02445</p> <p>https://www.childrenshospital.org/centers-and-services/departments/developmental-medicine</p> <p>Type of Assessment: Developmental Assessment</p> <p>Referral process: 617-355-7025. Ask for the Scheduling Dept.</p> <p>Insurance: All insurances except Health New England. MassHealth accepted</p>
<p>Developmental Neuropediatric (DNP) Program at Massachusetts General Hospital for Children</p>	<p>55 Fruit Street Boston, MA 02114</p> <p>https://www.massgeneral.org/children/neurology/developmentalneurology</p> <p>Type of Assessment: Developmental Assessment</p> <p>Referral process: 617-724-6400 #1</p> <p>Insurance: Blue Cross Blue Shield Private Pay</p>

<p>Dr. Lou Eckart</p>	<p>22 Mill St. #109 Arlington, MA</p> <p>http://eckart-phd.com/</p> <p>781-646-6306</p> <p>Type of Assessment: Developmental Assessment</p> <p>Referral process: lou@eckartphd.com</p> <p>Insurance: Blue Cross Blue Shield. Always Health</p>
<p>Integrated Center for Child Development</p>	<p>109 Oak St. G10 Newton, MA. 02464</p> <p>https://www.iccdpartners.org</p> <p>Type of Assessment: Developmental Assessment for many conditions including autism</p> <p>Referral process: 617-658-5600 x 1</p> <p>Insurance: Blue Cross, Harvard Pilgrim, Tufts, Cigna, Mass Health for Massachusetts in conjunction with Behavioral Health Partnership</p>
<p>Lurie Center, Mass General Hospital</p>	<p>1 Maguire Rd. Lexington, MA. 0242</p> <p>https://www.massgeneral.org/children/autism/lurie-center</p> <p>Type of Assessment: Autism Evaluation Contact the Access Center</p> <p>Referral process: 617-643-0511</p> <p>Insurance: Self-referrals are accepted. Find out during intake. Mass Health is accepted</p>
<p>Neuropsychology & Educational Services for Children and Adolescent</p>	<p>55 Chapel St. Suite 202 Newton, MA. 02458</p> <p>https://nescanewton.com/asd-diagnostic-clinic/</p> <p>617-658-9800 x 0</p> <p>Type of Assessment: Developmental Assessment by Renée Marchant</p>

	<p>Referral process: Online intake form https://nesca-newton.com</p> <p>Insurance: Blue Cross - Blue Shield Private pay</p>
<p>Touchstone Neurodevelopmental Center</p>	<p>304 Cambridge Rd. Suite 320 Woburn, MA 01801</p> <p>www.touchstonema.com</p> <p>Type of Assessment: Developmental Assessment.</p> <p>Referral process: Call to complete intake form 781-497-8164.</p> <p>Insurance: MassHealth not accepted</p>
<p>Dr. Rachel Wiseman</p>	<p>9 Court St. 2nd floor Arlington,02476</p> <p>Type of Assessment: Developmental Assessment</p> <p>Referral process: 781-643-3800.</p> <p>Insurance: Private pay.</p>

Family TIES of Massachusetts

www.massfamilyties.org

Family TIES of Massachusetts provides information and referral services, emotional support, and training to parents of children and youth with special needs. Driven and staffed by parents of children with special needs, they offer a unique type of emotional and practical support to families with similar life experiences. They are a primary source for information about Early Intervention and maintain a complete listing of Early Intervention Programs in MA.

Why reach out to Family TIES?

If you are working with a family who has a special needs child and is in need of caregiver support, Family TIES of MA has a Parent-to-Parent program that connects parents who face similar challenges in raising their children with special needs. Matches can be made based on a child's special health needs. For example: Chronic illness, Genetic condition, Hearing, vision or other impairment. Or other special needs such as: Intellectual, developmental or learning disability, Autism, Attention deficit disorders. Matches are also made based on life situations. A parent might want to speak with another parent whose child has transitioned from Early Intervention or Special Education.

Valeryia Pedersen

Parent-to-Parent Coordinator

Massachusetts Department of Public Health

Southeast Region

PH: (617) 399-8382 (remote)

EM: P2P@fcsn.org

P2P Office Hours: Mondays and Fridays

Boston Children's Hospital

As part of the Department of Otolaryngology and Communication Enhancement, the Speech-Language Pathology Program at Boston Children's Hospital provides services for children of all ages who experience difficulties with speech sound production, voice, resonance, fluency, language, and social communication. Evaluation and therapy services are provided at several Boston Children's Hospital locations.

Why reach out to Boston Children's Hospital?

The SPYC Itinerant Speech and Language Pathologist may identify children in need of deeper evaluation and more comprehensive services. Evaluation and short-term therapy services are available for concerns with speech production, fluency, receptive and expressive language, and social communication skills. Speech and language evaluations and therapy are conducted at multiple sites within the hospital system. Short-term social pragmatic groups are available on a limited basis at their Lexington and Waltham sites. For some young children, they also provide Parent Mediated Language Intervention (PMLI), an eight- to 10-week short-term service conducted via telehealth. Interpretation services are provided for children and families when needed.

- Speech and Language Program

Lexington 482 Bedford St. Lexington, MA 02420 Tel: 781-216-2999 Fax: 781-216-2900

Peabody 10 Centennial Dr, Peabody MA 01960 Tel: 781-216-3400 Fax: 781-216-3597

Waltham 9 Hope Ave, Waltham MA 02453 Tel: 781-216-2237 Fax: 781-216-2252

- Feeding and Swallowing

The Feeding and Swallowing Program at Boston Children's Hospital specializes in helping infants and children who have difficulty swallowing, eating, and drinking.

Boston: 617-355-7727/ Waltham: 781-216-2237

- Voice and Resonance

When there are concerns regarding hoarseness, pitch, loudness, resonance, or respiration, children are often seen in the Voice and Velopharyngeal Dysfunction Clinic, where a team evaluation is completed with an Otolaryngologist and Speech-Language Pathologist.

Boston and Waltham: 617-355-5116

Voice evaluations may be scheduled individually with the Speech-Language Pathologist when the child has already been evaluated by a medical specialist, e.g., Otolaryngologist or Pulmonologist, and the specialist makes a referral for voice evaluation/therapy.

Waltham: 781-216-2237

Federation for Children with Special Needs

www.fcsn.org

The Federation empowers families so that they have the information and resources they need for their children. They work with families with children from birth to adulthood, providing individual assistance, training, and leadership development and support. They focus on education, early intervention, health care, transitions, children in foster care and group homes, and building strong family engagement to support all children, especially those children with disabilities, those at risk, and those with economic, cultural or linguistic barriers.

The Federation has multiple initiatives to support, educate, and empower families and professionals around the education, health and community needs of children. These programs promote family engagement in all communities throughout Massachusetts. Their language line and outreach team can help families requiring language assistance.

Why reach out to FCSN?

Children who require special education, may also have special healthcare needs. The Family to Family Health Information Center at Mass Family Voices provides 1:1, free, confidential assistance and support to: parents and caregivers of children and youth with special health needs and professionals working with children and youth with special health needs

Contact: 617-236-7210 or 800-331-0688/ Fax: (617) 241-0330 / Email: info@fcsn.org

Address: The Schrafft Center 529 Main Street, Suite 1M3 Boston, MA 02129

Massachusetts Advocates for Children

www.massadvocates.org

Massachusetts Advocates for Children's mission is to remove barriers to educational and life opportunities for children and youth.

They do so by advocating for and partnering with students and families; transforming school cultures to be inclusive, safe and supportive; and creating systemic change so all children and youth can learn, reach their potential, and thrive.

They focus our advocacy on children and youth who face significant barriers, inequities, and/or discrimination because of their economic status, disability, race, ethnicity/culture, immigration status, English Learner status, and/or traumatic life experiences.

Why reach out to Mass Advocates For Children?

Mass Advocates for Children offers a helpline, where they provide help for children who are facing barriers to receiving educational support and services to which they are legally entitled. Their priorities are children with disabilities, children who have been expelled or suspended from school, English learner students, and children who have experienced racial discrimination and bullying. *If you are a service provider calling on behalf of a family, please encourage the family, as possible, to contact Helpline directly as they will need to speak with the family to do an intake before they can provide the necessary guidance and information.*

To call the Helpline: call their office and leave a message for their intake coordinator at (617) 357-8431 ext. 3224

Eliot Family Resource Center

www.eliotchs.org

Eliot's Children, Youth, and Families programming encompasses a broad array of outreach and wraparound services including Parenting and Pregnancy Support, Children's Community-Based Programming, Residential Programs, and The NAN Project, a mental health awareness and suicide prevention program.

Eliot recognizes the prevalence and impact of trauma and traumatic stress on children, youth, and families. Staff are trained in a variety of evidence-based and trauma-informed models, including Alternatives for Families Cognitive Behavioral Therapy (AF-CBT); Attachment, Regulation and Competency (ARC); and Trauma-Informed Cognitive Behavioral Therapy (TF-CBT).

Why reach out to Eliot Family Resource Center?

Eliot's Family Resource Center (FRC) welcomes people of all ages, incomes, and abilities. Skilled and thoughtful staff members help parents, children, and families find emotional support and practical assistance to succeed in life. Dedicated staff members help families find resources regarding:

- Housing support;
- Education;
- Utility assistance;
- Legal help;
- Summer camps, sports leagues, and more.
- The School Liaison helps families with issues including truancy, absenteeism, special education, and/or behavioral issues.

Children, Youth, and Families Behavioral Health

- Intensive Care Coordination: Utilizes the wraparound care planning process to coordinate multiple supports for youth and families.
- In-Home Therapy: Provides short-term family therapy to assist the family in stabilizing children in their homes during times of crisis.
- Therapeutic Mentoring: Offers one-on-one support for daily living, social, and communication needs to youth.
- Family Support and Training: Provides a structured, one-to-one, strengths-based relationship between a Family Partner and a parent/caregiver of a youth.
- Mobile Crisis Intervention: Provides mobile response in the home, school, or other community settings for youth experiencing a behavioral health crisis.
- Outpatient Counseling: Offers a variety of short to long-term interventions for children, youth and their families.
- Survivor Services: Provides services to individuals, families, and the community to promote recognition, understanding, and recovery from the impact of traumatic victimization.
- Children's Behavioral Health/Care Coordination: Encompasses multiple service systems that include Intensive Care Coordination, Family Support and Training, In-Home Therapy, Therapeutic Mentoring, Outpatient Therapy, and Psychiatry, and Mobile Crisis Intervention.

Caregiving and Pregnancy Support

- Early Intervention: Support for children from birth to three years of age who may have some delay in development, or who are at risk of delay.
- Family Resource Center: Offers solutions to families seeking health, safety, educational, and employment services.

- Healthy Families (Support for Young Parents): Offers a voluntary and free home-based family coaching program that supports young, first-time parents and helps them create stable, nurturing environments for their children. Healthy Families Massachusetts is a program of the Children’s Trust and is implemented locally by Massachusetts Society for the Prevention of Cruelty to Children (MSPCC), a division of Eliot.
- Mental Health Consultation: Provides assessment, intervention, and support strategies to address behavioral challenges.

For more information, please contact cyf@eliotchs.org.

Emergency Services/Mobile Crisis Intervention: (800) 988-1111 - 24 hours / 7 days per week

The Home for Little Wanderers

<https://www.thehome.org>

The Home for Little Wanderers helps children who are facing emotional, behavioral or mental health challenges through a broad continuum of clinical and support services, including family programs.

Children grow best when they can be at home with their own families. When a child's home is a safe place, community-based services like ours are more effective. So they serve children while strengthening families, providing integrated support in homes, schools, clinics and hospitals.

Why reach out to Home for Little Wanderers?

- Foster care and adoption programs to help children who are victims of trauma or grappling with significant emotional or behavioral challenges.
- Behavioral health and clinical services for children who are facing emotional, behavioral or mental health challenges
- Residential care that provides safe, stable surroundings for children and young adults who have experienced abuse and neglect or have severe behavioral problems require out-of-home placement
- Special Education Schools for individualized attention in a structured and supportive setting

They emphasize a team-based “wraparound” approach, which puts the vision and goals of each child and/or family at its center and “wraps” services around their unique needs. This helps keep children at home with their families in their own communities. When family life is unstable, we provide out-of-home placement as one of our many Clinical and Family Support services, which include:

Boston-Suffolk County Family Resource Center: Operated by The Home, The Boston-Suffolk County Family Resource Center is part of a statewide network of Family Resource Centers and primarily serves families from Boston, Chelsea, Winthrop and Revere, though families are welcome to receive services from any FRC in the Commonwealth. They require no referrals, are not insurance based and help families regardless of legal status. Their staff speaks English and Spanish. There are no eligibility requirements or costs associated with the program, and there is no waitlist.

For more information, contact: FRC@thehome.org

56 Dimock Street, Lower Level, Roxbury, MA 02119.

Phone: 617-469-8501

MONDAY 12pm–5pm/TUE, WED, THU 9:30am–7pm/ FRIDAY 9:30am–5pm/ SATURDAY (2nd & 4th) 10am–1pm.

Child and Family Counseling Center: The Child and Family Counseling Center (CFCC) is a licensed outpatient mental health clinic. Services are provided at a primary site in Roslindale, in clients' homes, and in other community settings. Clinicians are also embedded in more than 98 area schools. For referrals call 855-240-4663.

Safe at Home: Safe at Home is a team of therapists who work intensively with a child and his or her family in their home for a period of 3 weeks or 3 months. The team provides intensive in-home services as an alternative to placing a child in a hospital, foster care, or a residential program. For referrals call 855-240-4663.

Out at Home: Out at Home provides outpatient therapeutic support services for LGBTQ+ youth and young adults, their families, couples and caregivers. For referrals call 855-240-4663.

Parent Support Program: The Parent Support Program offers both structured and open-ended groups and workshops for parents who are caring for children with behavioral and mental health needs. All of our services are FREE.

For more information about the Parent Support Program contact: PSP@thehome.org or 617-469-8696
780 American Legion Highway, Roslindale, MA 02131

Early Years Project

www.riversidecc.org/child-family-services/early-childhood-services/early-years-project/

12 Tyler Street - Somerville, MA 02143

Phone: 617-629-3919

The Early Years Project supports children (infants through preschool) by working with their early childhood educators and families. Our child development specialists work with childcare centers and family child care providers to create welcoming communities for all children, and to address the needs of individual and/or groups of children about whom providers have concerns.

We collaborate with educators and families to understand the child and to support the child in the classroom and at home. We reflect on teaching practices, routines, curriculum, and the environment to promote well-being, healthy development, and learning. We share articles, handouts, and resources, and help with referrals for specialized services. Our work is strengths-based and grounded in respect of the cultural norms practiced within each center and family. We have Spanish and English-speaking specialists on our team. Our services are offered free of charge to any childcare center or family childcare provider in the City of Cambridge and by referral in Somerville. The Early Years Project is a collaboration that includes Riverside Community Care, the City of Cambridge, Birth to Grade Three Partnership, Cambridge Public Schools, the Cambridge Health Alliance, SomerPromise and Somerville Partnership for Young Children.

Why Reach out to Early Years Project?

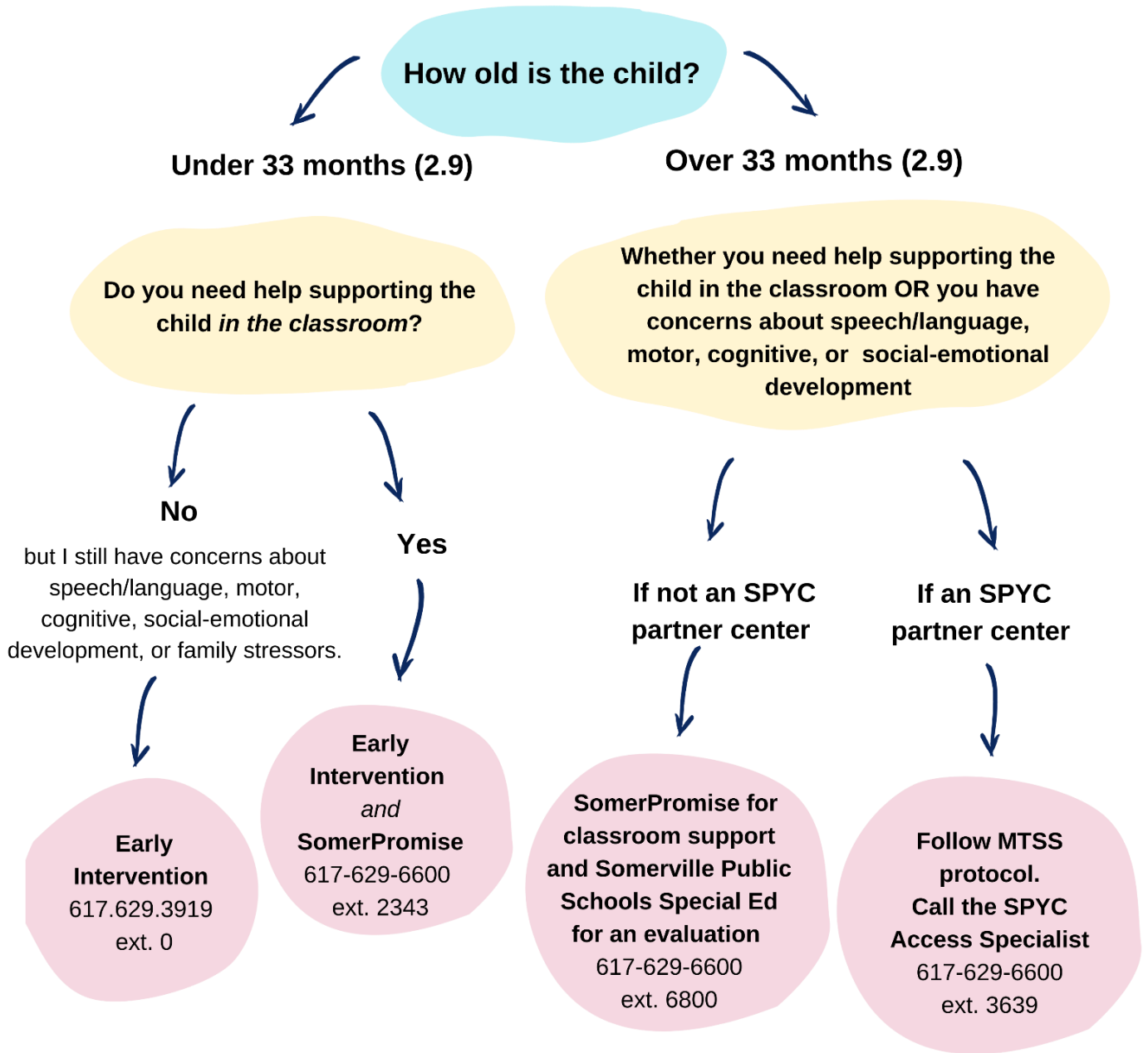
The Early Years Project is familiar with Somerville and can support your teachers and children on site. If you have concerns, questions, or want a thinking partner about:

- The emotions, behavior, or development of a child five or under
- Managing adult and child stress
- Supporting staff
- Reducing challenges in your program
- Accessing community resources to support children and families

Use the **EYP Decision Making Tree** on the next page to help you decide to call or ask an SPYC Itinerant Specialist.

For referrals, please call the Intake Coordinator at 617-702-5816 or email eyp@riversidecc.org.

Who to contact when you have concerns about a child's development or behavior in Somerville



Riverside Community Care

www.riversidecc.org

117 Summer Street - Somerville, MA 02143

Phone: 617-354-2275/ Fax: 617-625-0282

Riverside's Child and Family Services provide mental healthcare, early childhood programs, and family support services – and are dedicated to helping families succeed. They offer a range of programs that serve children and families at all levels of development – including before birth. Their goal is to keep the family at the center of care and focused on their child. They work collaboratively with pediatricians and other providers, all with the same goal. With decades of experience, their services easily integrate into a child's existing support system, building a team around the family's vision for their child's future and incorporating the needed support into the child's daily life.

Why Reach out to Riverside Community Care?

If help is needed with an infant, an older child, or a teenager around mental health, early childhood programs and family support services, their child and family services are easy to access. Below you will find the list of services they provide.

Outpatient Therapy for Children and Families is available at seven locations for young people who are struggling with their mental health or behavioral issues. Their Outpatient Centers offer comprehensive mental health services in comfortable and professional settings. Areas of expertise include (but are not limited to):

- Suicidal Thoughts/Self Harm
- ADHD
- Behavioral Issues
- School Refusal
- Trauma and Post-Traumatic Stress Disorder
- Abuse Issues
- Anxiety
- Depression
- Grief Support

Early Childhood Services are available for children from before birth to age 6, depending on the program. These services are designed to support children and their families to help give them a great start in life by providing educational, therapeutic, and supportive programming that support healthy development and relationships.

The Somerville Resource Handbook

<http://tinyurl.com/somervillehandbook>

The Somerville Resource Handbook is a curated resource for resources available in Somerville found on Somerville HubConnect. It includes information on early childhood programs, out of school time programs, housing, food access, immigration support, legal support, English language classes, mental health supports, and more!

The Who, What, Where, Why, How

- **WHO & WHY: This is a provider-facing handbook.** We curated this handbook with our multilingual residents in mind and know that they will need access to materials in their respective languages and in various formats (print and digital). However, we have intentionally chosen English as the preferred language in this document for two reasons:
 - ***The Somerville HubConnect has the ability to translate information into multiple languages.*** This handbook works hand-in-hand with the HubConnect. Where possible, we have hyperlinked each entry in the handbook to a corresponding link in the HubConnect, where you may easily get a translated version and then either forward or print information for clients.
 - ***The HubConnect is a powerful tool that is currently underutilized.*** However, as more service providers use the HubConnect, the smarter and more accurate the site becomes because YOU have the power to keep information updated!
- **WHAT: This is a flexible handbook.** You may use the handbook purely as a digital resource, print out specific sections for clients, or print the whole document to keep on your desk.
-
- **WHERE: This is a Somerville-centric handbook.** This handbook is NOT a comprehensive list of all possible resources out there. Where possible, we highlight local Somerville resources that are especially helpful for our multilingual, immigrant, or low-income residents.
- **HOW: This is a living, collaborative handbook.** Many wonderful people helped to create this document. You, too, can play a part in keeping information updated and useful for everyone. As they say in the MBTA, “If you see something, say something!”

As a part of the SPYC's Multi-Tiered System of Support, this Menu of Support and Referrals is a reference tool created for early childhood professionals to access current and updated resources to support children and families in receiving comprehensive and equitable access to early education and care. This report was made possible in collaboration with Ace Creative with funding from the Commonwealth Preschool Partnership Initiative.

ONE Somerville EVERY child

